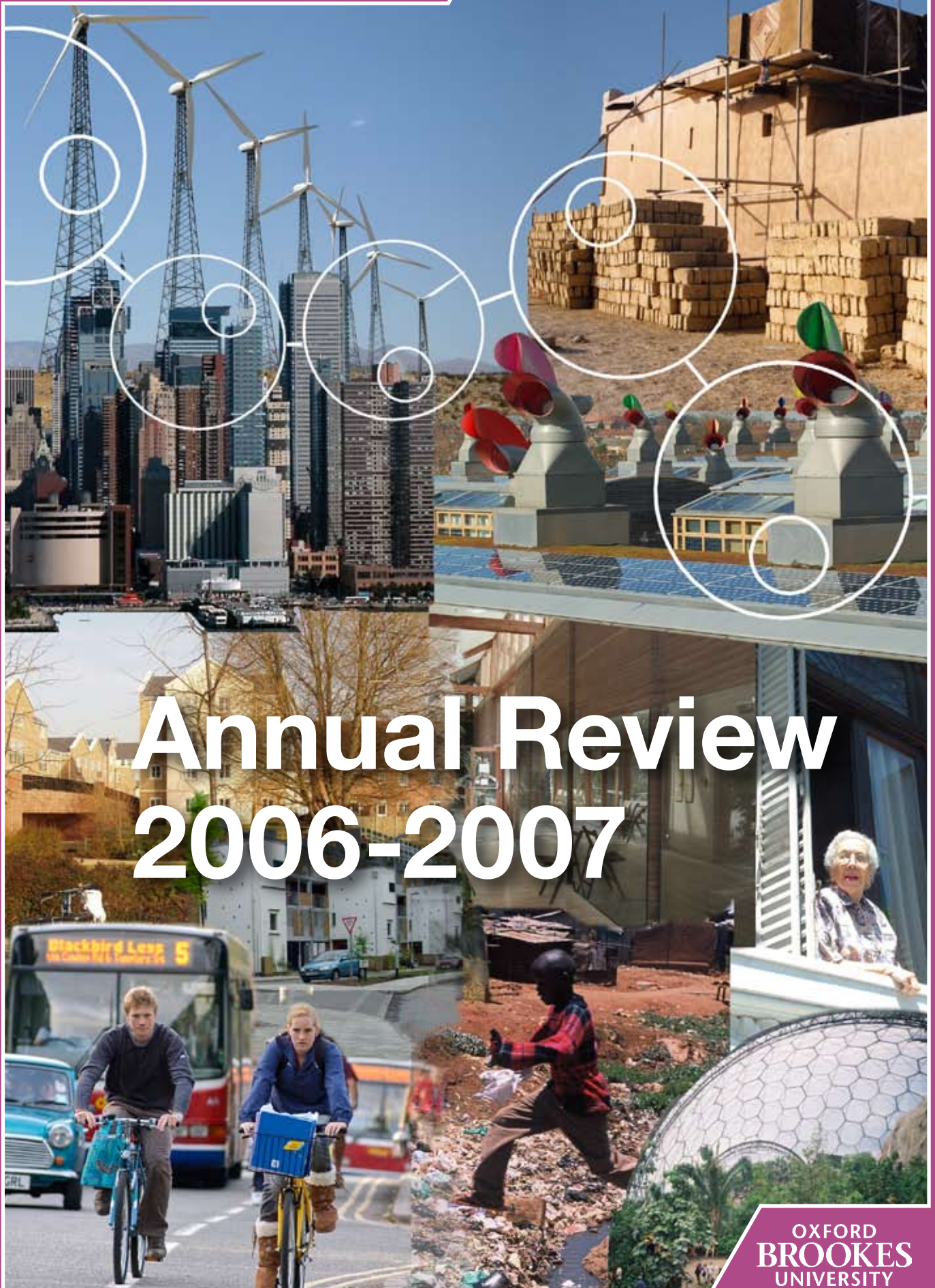


Oxford Institute for
Sustainable Development (OISD)

Creating sustainable
environments



Annual Review 2006-2007

OXFORD
BROOKES
UNIVERSITY

Annual Review: 2006-7

1. Introduction to OISD Annual Review 2006-7	4
2. OISD: who we are and what we do	5
3. OISD: stories from the year	8
4. New OISD research projects	16
5. OISD doctoral programme	18
6. Other OISD activities	20
7. Research esteem measures for OISD	21
8. Practising what we preach	23
9. Full OISD staff listings	24
10. OISD Publications	29
Appendix: OISD and SoBE Senior Management Team (Research) and Related Staff	43

1. Introduction to OISD Annual Review 2006-7

Something happened in 2007. Across the globe we began to argue less about whether the planet is warming up and more about the extent and the cause of the warming. We became aware of a newly endangered species, the 'climate change sceptic'. The Stern report, followed a few months later by the 2007 report of the IPCC, changed both the terms and direction of the debate. Climate change adaptation and mitigation are undeniably expensive, however, there is now widespread acceptance that the costs of inaction are likely to be far higher than the cost of action, CO₂-driven global warming looks to have an even chance of reaching a significant destabilising level over the next 50 years.

In 2008, therefore, we are faced with important policy decisions about balancing the resources we put into mitigation, against those we put into adaptation. Adaptation to changes in climate is not a new phenomenon, however, as humankind has been adapting to climate changes for most of its history. What is different today, is the likelihood of large changes occurring over a relatively short period and the clear view that things are going to get worse before they get better. Even if all new carbon production stopped instantly, it would take years, possibly decades, for any influence on the climate to work through complex systems. Whilst it's probably fair to argue that the longer term problems should be addressed through mitigation, it is going to be increasingly necessary to spend significant resources on adaptation.

Zero carbon buildings are not likely to be possible by technical means alone, which raises a number of important questions: are we prepared for the major changes of culture and behaviours which will be needed? are we prepared to challenge our own behaviour, office protocols and our lifestyles? are we prepared to dress differently and wear extra layers indoors in winter whilst tolerating warmer indoor summer temperatures?

The Oxford Institute for Sustainable Development (OISD) has become the key institutional structure within which our research in the School for the Built Environment is now based. OISD was listed recently by HEFCE as one of the leading research institutes in its field. In the context of the reality of climate change, answering critical research questions which interface with the emerging sustainability and corporate social responsibility policy agendas is a vital part of the Institute's work. With more than 100 research and academic staff, some 90 PhD students and an annual income earning capacity of £1million, the Institute continues on an upward trajectory.

This year Professor Tim Dixon (Professor of Real Estate) was appointed as the new Director of the Institute and under his leadership the Institute's portfolio of work has continued to grow in its relevance and diversity. This year the work has ranged from: how we can measure carbon footprints through to developing compact cities; from developing healthy and high quality environments for all ages to regenerating brownfield sites; and encompassed how (through new technologies and designs) we can develop cities and buildings that will be sustainable for all future generations.

You can learn more about this research and other aspects of OISD's work in this Annual Review. We are keen to build further partnerships with end-users and other interested parties, so please do get in touch with Tim Dixon or other OISD researchers for more information.



Professor John Raftery,
Pro-Vice Chancellor,
Dean, School of the
Built Environment.

OISD: Director's report



“This report makes clear that in the future, businesses will have to be green to grow. To manage their costs and to maintain the trust of their customers, they will need to build carbon management into their corporate DNA.”

Richard Lambert, CBI Director-General (CBI report- ‘Everyone’s Business: Climate Change’)

The story so far

Since our last annual review (for 2005-2006) published in 2007, there has been a sea-change in the way that businesses and the public sector have reacted to the issue of climate change and a growing recognition that the built environment must play its part in reducing carbon emissions. Some businesses have not always appreciated the significance of this, however. As recently as 2006, a UKCIP survey of FTSE100 companies found that only 10% of companies believed climate change posed a high risk to their business operations and, critically, the real estate sector was one of the least concerned with its risk.

The recent CBI report (quoted above) is important, therefore, because it recognises the clear need for

corporate action. This has been driven by an increasing focus on legislation and policy guidance in the UK, but also by a realisation that business stands to lose more through inaction than by doing something: in effect a realisation that we ‘mustn’t kill our customers’. In the words of the report, carbon has become the ‘corporate DNA’, and so it won’t be enough simply to rely on market forces: we will need a range of public policies to create incentives and pricing carbon is likely to be one of these. For example, we have seen press stories that the UK government is thinking strongly about pricing carbon in major infrastructure projects and we now have a new Green Fiscal Commission, which is examining ways of ‘greening’ the UK tax system, or moving taxes from ‘goods’ like labour, to ‘bads’ like environmental damage. It is clear that lifestyles and business behaviours will have to change if we are to tackle global warming.

But we must not forget the huge change that climate change is likely to have in the developing world and its impact in less developed countries, where forced migration and huge disruptions to people’s lives are likely to be commonplace. Understanding the causality of these changes is important, but also their impacts. In another sense that is why technological solutions in climate change adaptation and mitigation are so important, and it is testimony to the growth of Professor Ray Ogden’s Technology Unit in OISD that innovative technological solutions really can change the world and lead to better building design.

Having said all of that, we must not forget that sustainability is also about getting the balance right and making sure the social dimension, and indeed the governance dimensions, don’t drop out of our vocabulary. That is also why the built environment professions have a key role to play in helping realise the sustainable future we all want to create in a truly holistic way.

As an example of this we have recently completed research for the Royal Institution of Chartered Surveyors (RICS), working with Georgia State University and the University of Melbourne, which examined the way in which RICS members (or chartered surveyors) are engaging with the sustainable development agenda and the extent to which they are using available tools and information sources to undertake their work. The results from our ‘Green Profession’ research suggest that although sustainability is highly relevant to their work, a lack of knowledge and expertise is making it more difficult for sustainability tools and other information to be used effectively. The RICS is, however, not alone in seeking to understand its members’ needs more clearly. In the built environment professions new initiatives have also been developed to ‘mainstream’ sustainable development in professional practice. For example, the Engineering Council UK changed its registration requirements in 2004 to include sustainability, which now means that all chartered engineers must demonstrate commitment and practice to sustainable development. The RICS have now also introduced a new set of mandatory competencies for membership, which includes sustainability and have more recently in 2005, introduced a ‘Sustainability Policy’.

At Oxford Brookes, therefore, we have sought over the last few years to anchor and mainstream good sustainability practice within our taught courses in the School for the Built Environment and within our operations. In this sense Oxford Brookes has a strong tradition of taking environmental issues seriously. For example, the University was recently placed in the top five most environmental universities and received a Highly Commended in the 2007 Green Gown awards. Brookes good practice in this area was referenced in the recent Universities UK report, ‘Greening Spires’.

Responding to new challenges

Research can help understand professional requirements more clearly, but it can also extend and challenge professional knowledge and understanding with ground-breaking research. When John Glasson and Mike Jenks founded OISD in 2004, the clear thinking then was to produce a cutting-edge research institute that would bring together a range of disciplines to advance knowledge and practice in creating sustainable environments. Today, with more than 100 research and academic staff working within and across disciplines, some 90 PhD students, and an annual income earning capacity of more than £1.0m, the Institute is clearly on an upward trajectory. For example, OISD:Technology has seen its funding quadrupled (at a time when funding to universities and other research organisations for research in steel construction technology has been halved or even stopped) whilst OISD:International Land Markets has seen a doubling of research income. These achievements underpin much of the successful work we are undertaking within PPM^{BE} as part of our HEIF3 funded programme.

However, we are always seeking to respond to new challenges and to develop our research partnerships with end-users. One of the key highlights for us recently, therefore, was our 'Change to Survive' conference which showcased our research in OISD to an audience of more than 80 delegates from the public and private sectors (for more on this see our recent 2008 newsletter, available for download from our website)

We are also delighted to learn that a new HEFCE report into sustainable development in higher education in England suggests that OISD is one of the key players in sustainable development research. The report analysed 93 higher education institutions where research is carried out, and suggests that in

terms of income, staff and students, OISD is among the most important sustainable development research institutes in England. This view is also reinforced in a Times Higher Education Article which lists Brookes as 'influential'.

We have also joined the UK Green Building Council. The UKGBC was launched in February 2007 to bring cohesion to the green building movement and is a campaigner for a sustainable built environment. Its main task is to bring clarity, purpose and co-ordination of strategy to the sector. OISD is delighted to join the UK Green Building Council. The Council's mission fits closely with our own in terms of a progressive, positive and solutions-led approach. There is a particular synergy through our joint desire to promote research and innovation and the spread of best practice to develop a sustainable built environment.



In building our research base we also aim to be an attractive home for a large group of high profile research staff who are widely recognised within their field nationally and internationally. Corporate responsibility within the Institute and its relationship with the wider environment internationally, nationally, regionally and locally are therefore paramount.

Finally, this year also saw the retirement of the founders of OISD, Professor John Glasson and Professor Mike Jenks. The Institute owes John and Mike a huge debt of gratitude for their foresight in setting up OISD in 2004 and providing a really solid foundation on which to build for the future. It is good to know that their ties with Brookes are

not completely broken as they are now both Emeritus Professors in the School and within OISD.

In this report we tell the story of OISD research, which spans our full range of activities across our six specialist research groups. The report covers the following main areas of our activity:

- Some OISD highlights from the last year
- New OISD projects
- OISD doctoral programmes
- Other OISD activities
- Research esteem measures for OISD
- Practising what we preach: some examples
- Full OISD staff listings
- OISD publications
- OISD conference papers and presentations.

This represents a breadth of disciplines ranging from planning and architecture to real estate and construction, but with important collaborations outside OISD focusing on multidisciplinary work. We hope you enjoy reading the report and please contact us if you would like to find out more about our work (See Appendix 1 for our contact and biographical details).



Professor Tim Dixon, Director of OISD and Professor of Real Estate

Acknowledgement: We would like to thank all our colleagues in OISD, the School for the Built Environment, and the School departments in compiling this report, especially Dr Bridget Durning, Michele Dodd and Dr Noriko Otsuka.

3.0 OISD: stories from the year

OISD starts work on Phase 2 of I'DGO (Inclusive Design for Getting Outdoors)



Left to right: Dr Nicola Dempsey, Lynne Mitchell and Amanda Griffin



Professor Elizabeth Burton



Funded by EPSRC's EQUAL– Extending Quality Life – programme, the I'DGO consortium was set up in 2003 to investigate how outdoor environments affect older people's quality of life and to identify what aspects of design help or hinder older people in using the outdoors. The new I'DGO TOO project and a website with findings from I'DGO research to date, were showcased at a launch in London on 21st June 2007 which was addressed by Mike Lake, Director of Help the Aged, and Louise Plouffe, Senior Technical Officer at the World Health Organisation.

The I'DGO consortium comprises the WISE (Wellbeing in Sustainable Environments) research unit at OISD, the OPENspace research centre at Edinburgh College of Art and SURFACE Inclusive Design Research Centre at the University of Salford. Collaboration from Heriot-Watt University, the University of Edinburgh and over 30 partners outside higher education institutions completes the team.

I'DGO TOO is focusing on policies and strategies currently being promoted by government where potentially important, practical implications for older people's lives have not fully been explored and tested. The project involves work at three different levels of detail:

- OISD:WISE are researching the implications of high-density urban housing on residential outdoor space, such as gardens and balconies
- OPENspace are researching pedestrian-friendly approaches (such as Home Zones) in street environments
- SURFACE are researching the practical consequences of using tactile paving (designed to assist people with visual impairment) for older people in the urban environment.

The voices of older people themselves are a key element in this research. From the beginning, older people will be involved in expressing what is important to them and in shaping the development of the programme. The consortium welcomes the opportunity to involve new collaborators.

Professor Elizabeth Burton and Lynne Mitchell have recruited Dr Nicola Dempsey and Amanda Griffin to work with them in OISD:WISE on the I'DGO TOO project. Elizabeth Burton said:

'We are delighted to have won this funding in what we believe is a vital area of research to benefit an ageing UK population'.

For further information please visit www.idgo.ac.uk or contact Lynne Mitchell (lmitchell@brookes.ac.uk)

OIDSD Wins New Contract with UrbanBuzz Programme

The Oxford Institute for Sustainable Development (OIDSD) has been appointed as Independent Evaluator on a major new £5 million Higher Education Innovation Fund (HEIF 3) funded initiative called 'UrbanBuzz: Building Sustainable Communities'. The evaluation project is led by Professor Mike Jenks, with Professor John Glasson and Professor Tim Dixon. Dr Carol Dair has been appointed as the research fellow to carry out the evaluation.

UrbanBuzz is a 2 year joint venture between UCL and the University of East London. It involves over 120 partner organisations from the worlds of finance, management, design and implementation together with residents and regulators. It is a practical, evidence-based programme designed to share knowledge, stimulate new thinking and make the ideal of building sustainable communities a reality. Its overall aim is to increase knowledge on how to build sustainable communities; knowledge transfer associated with building sustainable communities has been identified as a key factor to enable successful delivery.



Prof Mike Jenks and Dr Carol Dair

Mike Jenks said:

'As the Independent Evaluator, our task is to evaluate the success of the UrbanBuzz programme in achieving its sustainability and knowledge transfer objectives, and the effectiveness of the UrbanBuzz processes through sponsorship of projects, innovation and business fellows, courses, and networks. OIDSD has provided the programme with evaluation criteria and will report on a regular basis to the UrbanBuzz Programme Board. This work is a vital part of the whole programme'.

Carol Dair said:

'It is not knowledge per se that is the problem but the lack of the right knowledge in the right places to inform development that is thwarting delivery. We are delighted to win this contract and we are working closely with the Urban Buzz team'.

For further information contact Professor Mike Jenks (mjenks@brookes.ac.uk) or Dr Carol Dair (cmdair@brookes.ac.uk)



Minimising the carbon footprint of existing buildings



Dr. Fionn Stevenson

In the first of several seminars directed at business leaders in the local region during 2007, Dr. Fionn Stevenson (newly appointed Reader in Sustainable Design and co-director of the OIDSD:Architecture research unit) presented key priorities and strategies for minimising the amount of carbon emissions from existing buildings. The seminar was organised by Peter Brett Associates, a leading international consultancy firm for environmental projects, as part of National Sustainability week.

The seminar highlighted that the new 'carbon map' launched by the Carbon Trust in June 2007 clearly identifies Reading businesses as the third worst polluters in the UK, with 50% of the town's total carbon dioxide emissions being produced by the corporate sector. Oxford follows surprisingly close behind with 49% of its carbon dioxide emissions produced by the corporate sector. Both places are around 10% above the national average, which reflects the strong investment in the region that has taken place in terms of high tech industries— well know for using a large amount of energy!

The seminar also emphasised that within the corporate sector, buildings contribute considerably to the carbon footprint of an area through the amount of energy needed to develop, operate, maintain and eventually demolish them. The amount of energy used by lighting and appliances is one of the fastest growing areas of carbon emissions and can easily account for 40-50% of energy use within a well insulated building. However, buildings can often be 'fine tuned' during their lifetime to reduce inefficiencies such as poor building management systems which often result in heating, lighting and ventilation being left on in empty rooms or at the wrong times.

OISD:Architecture researchers have carried out a number of post occupancy studies, of housing stock, schools, health buildings and offices. This is a rapidly expanding area of work, as CEO's realise that the triple bottom line of sustainable development – environmental, economic and social factors - can only be met if adequate feedback on building performance is obtained and fed back into procurement and management strategies.

Dr.Fionn Stevenson said:

'The OISD:Architecture research unit is keen to build links which strengthen collaboration between academia and business within the region to help reduce the carbon footprint created by existing buildings. Part of the expertise we can offer is to tailor-make post occupancy evaluation to work out where the emissions are occurring and what can be done to reduce them. This involves a portfolio of methods including qualitative user surveys, building performance analysis and physical monitoring where necessary. Working directly with the users is just as important as looking at the building itself.'

Path dependence, territorial innovation systems and the absorptive capacities of English city regions

Prof James Simmie, Dr Juliet Carpenter, Dr Ellie Jupp and Andrew Chadwick of OISD, and Prof Ron Martin of Cambridge University, have won a new research project funded by the National Endowment for Science, Technology and the Arts (NESTA). Total funding is £125,000 over 2007-2008. The topic is 'Path dependence, territorial innovation systems and the absorptive capacities of English city regions'.

The theoretical starting point that informs this research is that the evolution of spatial economies is path dependent over considerable periods of time. As a result of the different pathways taken by different spatial economies, the economic performance of UK regions and the major cities located in them have been diverging rather than converging over considerable periods of time. We propose to test the hypothesis that one of the key reasons for this finding is that the path dependence of city regional economies rests on the different absorptive capacities, defined as their 'ability to identify, assimilate and exploit knowledge from external sources', of their distinctive local territorial innovation systems.

This research is closely linked with the emerging UK city regions and innovation policy agenda. It will lead to suggestions for actionable policy principles for those branches of government concerned with urban and regional innovation policy.

*For further information contact
Professor James Simmie
(jsimmie@brookes.ac.uk)*

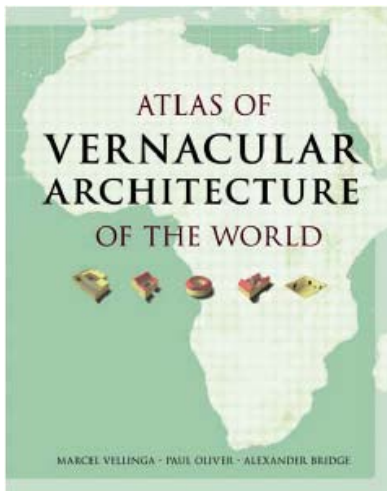


Prof Ron Martin, Cambridge University



Andrew Chadwick, Prof James Simmie, Dr Juliet Carpenter and Dr Ellie Jupp of OISD

The Atlas of Vernacular Architecture of the World



Atlas of Vernacular Architecture of the World, Routledge, Published December 2007



Marcel Vellinga

For the first time ever, Paul Oliver, Marcel Vellinga and cartographer Alexander Bridge have produced an atlas that maps the world's vernacular architectural traditions on a cross-cultural basis, seen in the contexts of diverse environments, climates, economies and forms. No other atlas exists that deals with vernacular architecture in such a comprehensive manner.

The 'Atlas of Vernacular Architecture of the World' complements Paul Oliver's prize-winning 'Encyclopedia of Vernacular Architecture of the World'.

Greening and Energy-Efficient Cities: UK-India Symposium, 7-8 February, British Council Delhi, India



Rajat Gupta (front row left with other conference speakers)

The first UK-India symposium on 'Greening Events and Energy-Efficient Cities for Lasting Legacies', co-organised by Dr Rajat Gupta, (a senior researcher and Co-Director of OISD:Architecture) and Professor Susan Roaf (Heriot Watt University) with the British Council, closed in Delhi (India) on 8th February 2007 with a route-map for future action in greening events, energy-efficient cities and lasting legacies. It called for cities to adopt renewable and sustainable energy strategies and to consider major international events like the Delhi Commonwealth Games in 2010 as an opportunity for reducing the environmental impact of the event itself, as well as the city, through sustainable design and construction of sports venues and infrastructure.

The high-profile event, opened by the Chief Minister of Delhi, Mrs Sheila Dikshit, was attended by about 400 delegates from the worlds of architecture, science, business and policy-making, including 150 students from the schools of architecture and engineering. The symposium programme included specific sessions in areas of sustainable architecture, infrastructure development for greening games, sustainable transport, resource efficiency in planning, as well as exploring positive action for a lasting legacy. Representatives from about 20 Indian cities participated, whilst six Mayors declared their support for greening



cities and events as part of the closing ceremony, which concluded with an inspiring speech by Dr Karan Singh, Member of Parliament, India. Meetings were held between the UK speakers and the Delhi Mayor and planning authorities to discuss how the concepts of greening events and cities could be put into practice.

This major UK-India symposium not only brought together like-minded professionals and institutions to share expertise and experiences related to greening events and cities, but it also acted as an incubator for a number of collaborations and knowledge-based networks for future.

Dr Rajat Gupta, Conference Co-chair said:

'Delhi is witnessing rapid urban growth to meet the demands of an increasing urban population and the forthcoming 2010 Commonwealth games. This UK-India symposium has shown how environmental and sustainable strategies could be infused in both new and existing buildings and infrastructure to work towards a credible sustainable future and significantly improve the quality of life for all involved.'

Two New Research Reports Completed for RICS



Researchers in OISD:International Land Markets Group (based in Department of Real Estate and Construction) have completed two major funded research projects for the Royal Institution of Chartered Surveyors (RICS). These are:

- A Green Profession: RICS Members and the Sustainability Agenda (carried out in conjunction with University of Melbourne and Georgia State University with support from King Sturge)
- Why China, Why Now? The role of property markets in supporting economic and social development in China

The 'Green Profession' research (led by Prof. Tim Dixon, with Dr Andrea Colantonio and David Shiers of OISD:ILM) suggests that property professionals consider sustainability highly relevant in their daily professional work. Legal compliance, ethical motivations and responsibility to protect the environment are the most important drivers in maintaining

engagement, based on a major survey of 47 000 RICS members, with telephone interviews and case study work across three main global regions (UK and continental Europe, America and the rest of the world). Stephen Brown, Head of Research at RICS said:

'With issues of sustainability and sustainable development becoming an increasingly important factor in the global political and business agendas, this report is an invaluable document for the industry and will contribute towards our aspirations of creating a sustainable future. Committed RICS faculties in the area of planning and development, facilities management, environment, minerals and waste management and rural and project management around the world can become key leaders and essential players in the battle against climate change within the built environment worldwide.'

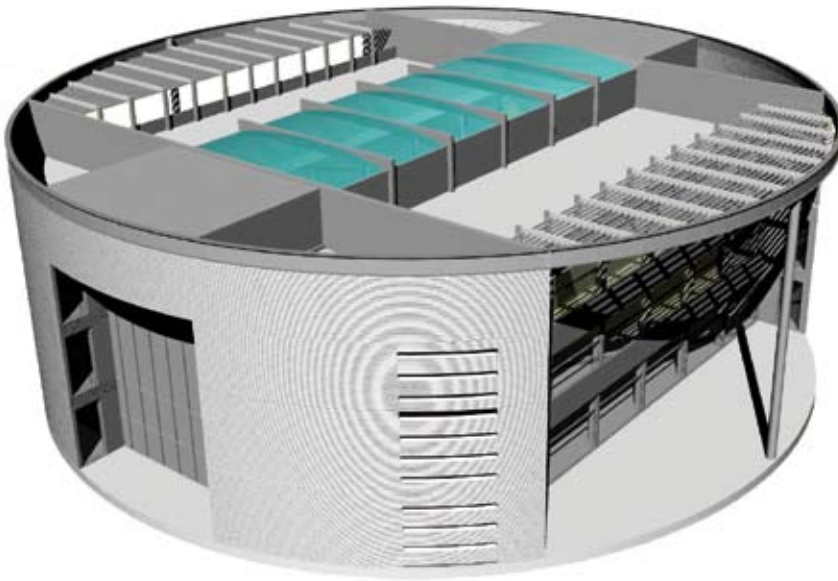
For further details see the project website at the OISD website.

In the 'Why China Why Now?' report, funded by RICS and Shui On Land, Dr Albert Cao and Dr Ramin Keivani explore the degree to which China's property markets are ready, both to take their place on the world stage as part of the global investment market and to play their role in supporting the development of the Chinese economy and society. In the foreword to the report, Mr See Lian Ong (Chairman of RICS Asia Pacific) writes:

'This report by Oxford Brookes University, provides a clear analysis of the processes driving property markets in China to date and puts forward a clear set of recommendations as to how this can be sustained, supporting the harmonious economic and social development of China. I welcome and commend this report and I am sure that the recommendations that it puts forward can be of great value in supporting the future development of the Chinese economy and society'

Further details of the report may be found on the RICS website (<http://www.rics.org>).

The Corus Centre for the Building Envelope



Founded in October 2005, the Corus Centre for the Building Envelope, an industry sponsored part of OISD, has grown rapidly with an expanding portfolio of work in low energy design and related areas. It has a fast developing national and international reputation for agenda leadership within the steel sector. With major skills in the areas of building physics, building construction, sustainable design and construction economics, it is a powerful new resource, supporting major product and process innovation, and capable of achieving far more rapid development cycles than previously possible. The speed and sophistication of this process are essential for the UK and Europe to compete effectively in the rapidly changing global market, and to deliver low carbon engineering solutions essential to meeting the climate change agenda.

The Centre is independent but collaborates closely with industry. It has a carefully considered

cross-cutting ethos that integrates commercial reality with serious academic endeavour to deliver well founded commercialisable solutions. The Oxford Brookes University and Corus relationship is widely regarded as being one of the most successful between academia and industry in the UK, developed over many years of close and productive working. This latest development heralds an additional dimension.

The Centre, encompassed within the Technology group of the OISD, will develop and expand the already successful research and consultancy portfolio of the group, which in addition to fundamental research, is committed to the application of new ideas. The group works regularly with leading practices, research institutes, and government and industry partners in the UK, Europe and internationally.

The Centre represents a bold, highly successful, and innovative model

for co-operative working. It places Oxford Brookes at the heart of the steel sector's strategic research and development.

A product of research work in the Corus Centre for the Building Envelope is the low energy corporate headquarters building for Corus Colors in Shotton, near Chester. The principles of the design were to accommodate 180 Corus Colors staff in an innovative building, a showpiece for the newest products and methods, and setting new standards in sustainability and low carbon emissions. Prof Ray Ogden of the Corus Centre for the Building Envelope worked with the design team of Adrian James Architects, Integral Structural Design, Troup Bywaters+Anders and Willmott Dixon. Above is a view of the projected building.

Contact: Prof. Ray Ogden (rgogden@brookes.ac.uk) from Architecture, Culture and Technology Group

Recent funding successes for carbon-counting research in OISD



Dr Rajat Gupta

Towards the end of 2007, Dr Rajat Gupta, a senior lecturer in the Department of Architecture and Co-Director of the OISD:Architecture unit, was awarded a series of research grants and contracts in the area of carbon-counting and carbon-reduction from buildings and cities which will be undertaken during 2007-2008. Dr Gupta is the developer of the award-winning GIS-based model called DECoRuM®, which has become a toolkit for carbon emission reduction planning in cities (see: www.decorum-model.org.uk). Smita Chandiwala, researcher in carbon-counting, will also be working on these exciting new projects.

Dr Gupta was awarded a 6-month research contract worth £30,000 by the second largest registered social landlord in the UK (Homegroup), to develop the first comprehensive 'toolkit' for the recently-launched Code for Sustainable Homes (CSH) that underpins the UK government's target of building zero carbon homes by 2016. The overall aim of the project is to develop a user-friendly toolkit for Homegroup to help them assess the carbon impact and



Smita Chandiwala

financial viability of achieving levels 4, 5, and 6 of CSH for a representative sample of new-build homes. The CSH toolkit will utilise the energy modelling principles of DECoRuM®, and could have major application within the housing sector, given the growing impetus on building low/zero carbon homes.

Following on from the success of a UK-India symposium on 'Greening cities' held in February 2007 (Delhi), British Council has awarded Dr Gupta, funding of £16,800 to organise and chair, a follow-up UK-India Young Scientists conference on 'Towards sustainable energy technologies and low carbon buildings' to be held in Delhi in February 2008. The local partner for this conference is the reputed Indian Institute of Technology (IIT) Delhi.

Since September 2007, research has also begun on a 3.5 year EPSRC Case project which aims to 'assess the potential of ground source heat pumps in reducing energy-related carbon emissions from UK housing, in a changing climate'. The project, which is worth about £85,000 is led

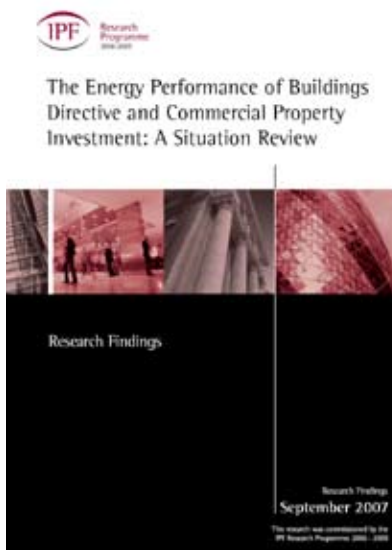
by Dr Gupta, in collaboration with an Industrial partner, Ice Energy, who are well-known installers of heat pumps. There is a PhD studentship attached to the project, which has been awarded to Robert Irving.

The principles of measuring urban carbon emissions will be applied in another recently-confirmed project (funded by UrbanBuzz), which aims to develop a creative workshop-style training programme for UK local planning authorities on securing sustainable design standards. Dr Gupta is part of a team of Academic Fellows which also includes fellow OISD experts David Shiers (OISD:ILM) and Aylin Orbasli (OISD:ACT). Dr Gupta is responsible for providing expert advice on the urban carbon emissions impact of selected live planning applications.

It is hoped that these range of projects will further expand and strengthen the carbon-counting research capability in OISD.

*For further information contact
Dr Rajat Gupta (rgupta@brookes.ac.uk)*

OISD research for IPF shows that Energy Performance Certificates will impact on commercial property prices



The latest research findings by OISD:ILM for Investment Property Forum (IPF) on Energy Performance Certificates (EPCs) show investors expect 'price chipping' to emerge during rent and lease negotiations as a result of poor building energy ratings, but that the market does not yet see a clear business case for upgrading stock.

In this latest report, work by Oxford Brookes University and King Sturge (published by the Investment Property Forum Research Programme) shows the market remains unprepared for the implementation of energy performance certificates and unconvinced of a business case for upgrading stock. According to Miles Keeping, Partner at King Sturge LLP:

'There is still no evidence to suggest more energy efficient buildings will command higher rents but there is an expectation amongst investors that energy inefficiency will lead to 'price chipping' during rental negotiations. This could lead to less efficient buildings incurring diminished rental growth.'

Businesses that are gearing up for implementation are being hampered by the lack of key information regarding the energy performance certificates, including the setting of the A-G rating bands. Uncertainty also remains regarding the availability of sufficient numbers of assessors. Prof Tim Dixon of Oxford Brookes University said:

'The same problems that have hampered the residential market seem likely to hamper the commercial market: the harsh reality is that a continued shortage of assessors could potentially hold up the ambitious timetable for EPCs.'

Evidence was found of a continuing market perception that the capital-expenditure required to upgrade existing buildings remains too high for it to be economically feasible in most cases. Government estimates suggest the introduction of EPCs for commercial buildings will initially cost approximately £102m in 2008 in England and Wales. This represents the equivalent of about 2.5% of annual property development and improvement investment expenditure for the whole of the UK.

Other issues raised by the report include the considerable variation in implementation and timing across Europe: for example, many countries are adopting only EPCs and not operational energy certification, which the UK has committed to introducing. This will lead to variation in obligations and, potentially, management costs across European property portfolios.

Philip Parnell, Partner at Drivers Jonas and a member of the project steering group says:

'This research is an important piece of work. As market conditions continue to become more challenging and increasing focus is given to a property's 'blemishes' it is quite conceivable that a perceived poor energy rating could be used to chip either purchase or rental bids. This presents valuers with the challenge of interpreting such market reaction when analysing comparables, and assessing both the impact on void/marketing periods and resulting effective rents for lettings from a valuation standpoint.'

This research was funded by the IPF Research Programme 2006 – 2009.

For further information contact Prof. Tim Dixon (tdixon@brookes.ac.uk)

4. New OISD research projects

OISD annual income during 2006-07 was approximately £1million comprising:

Research Councils	£437,000
UK Charities	£10,000
UK Government/Local authority	£280,000
UK Industry	£145,000
EU Government Bodies	£104,000
Other Overseas	£2,000
Other Sources	£2,000

Table 1 sets out the details of our successful grant bids for 2006-07 for those above £5000 in income.

Table 1 Some examples of successful bids 2006-2007 (grants in excess of £5000 only)

Funder	Title	Lead Academic	OISD Unit	Amount	Date Awarded	Start Date	Finish Date
OBU-HEIF3	CSR and Sustainability	Tim Dixon, Ray Ogden, John Glasson, Rajat Gupta	EASP, ACT, ILM	£244,960	01/08/2006	01/08/2006	31/07/2008
EPSRC	Doctoral training grant Tranche 1	Elizabeth Burton	SUE	£154,748	08/08/2006	01/11/2006	30/10/2008
NESTA	Path dependence, territorial innovation and the absorptive capacities of city regional economies	James Simmie	EASP	£125,000	19/12/2006	01/03/2007	28/05/2008
EPSRC	CASE studentship - assessing the potential for heat pumps to reduce carbon emissions from UK housing in a changing climate	Rajat Gupta	ACT	£83,092	05/03/2007	01/09/2007	31/08/2010
EU FP6	MACIS - minimisation of an adaption to climate change	Jake Piper	EASP	£63,810	01/11/2006	01/11/2006	31/10/2008
DCLG	Modelling the future take-up of low cost home ownership products	Youngha Cho	ILM	£32,000	18/10/2006	01/11/2006	01/10/2007
EU	STACCATO (Renovation of Housing in Three European Capitals)	Chris Kendrick	ACT	£31,336	25/09/2006	07/11/2007	06/11/2012
CORUS	Corus Tubes	Ray Ogden	ACT	£30,000	01/02/2007	01/02/2007	reviewed each year
Terrapin	Framework agreement	Ray Ogden	ACT	£30,000	01/01/2007	01/01/2007	open
The Millennium Block Limited	Development and Testing of a mortar free building system based on patented building block designs	Ray Ogden	ACT	£26,911	15/06/2007	11/07/2007	11/01/2008
AOSEC (GROW)	Building the future - sustainable construction for professionals (sustainable construction in FE colleges)	Rajta Gupta	ACT	£21,350	05/09/2006	29/09/2006	31/12/2007
Deborah Services Ltd	Development testing to BSEN 12811-3	Mike Godley	ILM	£19,400	09/05/2007	01/06/2007	01/12/2007

UKAEA	JET public consultation	John Glasson	EASP	£18,000	06/11/2006	06/11/2006	31/03/2007
British Council Delhi	Conference	Rajat Gupta	ACT	£16,600	20/10/2006	01/11/2006	31/10/2007
Geoffrey Osbourne Ltd	Best practice advice for the design of a mental health facility, Southampton	Elizabeth Burton	SUE	£11,325	05/10/2006	01/12/2006	30/11/2007
British Academy	Conference grant for 11th conference of the Int Association for the Study of Traditional Environments (IASTE)	John Glasson	EASP	£10,000	18/12/2006	12/12/2008	15/12/2008
Steel Construction Institute	Climate change and future housing	Chris Kendrick	ACT	£9,425	22/11/2006	22/11/2006	28/02/2007
Infinergy	Tom Nan Clach proposed Wind Farm - Socio Economic Study	John Glasson	EASP	£9,000	14/03/2007	14/03/2007	31/10/2007
VROM	Publication results UPE congress 2007	Mike Jenks	ACT	£8,333	22/12/2006	01/01/2007	31/12/2007
Investment Property Forum	EU Energy Performance of Buildings Directive	Tim Dixon	ILM	£7,846	27/11/2006	01/01/2007	31/03/2007
SGB Group Engineering	Gass-lite shoring system-structural testing for SGB	Mike Godley	ILM	£7,305	01/10/2006	01/10/2006	01/12/2006
Magnox Electric	Berkeley and Magnox Decommissioning studies	Andrew Chadwick	EASP	£6,000	04/01/2007	04/01/2007	30/06/2007
Sustrans	Parental attitudes towards child cycling mobility for the school journey - Aylesbury and London studies	Tim Jones	EASP	£5,318	12/10/2006	01/01/2007	31/07/2007
Oxfordshire County Council	Consultancy advice on EIA of reservoir	Joe Weston	EASP	£5,000	01/10/2006	01/10/2006	01/04/2007

5.0 OISD doctoral programme

OISD and the School of the built Environment place a strong emphasis on linking research with teaching. Since 2001 doctoral numbers within OISD have grown at approximately 5% per annum. In terms of total numbers doctoral numbers increased from 71 (2006) to 78 (2007) (approx. 54). OISD accounts for about 20% of University enrolment totals. Table 2 shows the conferments (i.e. those who were examined and awarded their PhD in this year) in detail.

Table 2 PhD Conferments (2006-2007)

Surname	First name	Planning	Project title
Dempsey	Nicola	Architecture	The influence of the quality of the built environment on social cohesion in English neighbourhoods
Birch	Kean	Planning	Biotechnology value chains as a case study of the knowledge economy - the relationship between knowledge, space and technology
Odeleye	Delle	Urban Design	Chaos, complexity and implicate order in urban design: towards a neo-geomantic 'language' of place
Gomez-Gamez	Celida	Urban Design	Developing inclusive community regeneration processes: the case of San Juan De Dios, Guadalajara

**Dr Nicola Dempsey:
The Influence of the Quality
of the Built Environment on
Social Cohesion in English
Neighbourhoods (Award of
degree: December 2006)**

High quality built environments have long been advocated as places in which people should live and work by urban planning and design theorists and practitioners on the grounds that they support positive social activity and behaviour. Current UK policy is focused on supporting cohesive communities which provide residents with safe, healthy and sustainable environments. Such assertions make claim to a direct, positive association between high quality places and socially cohesive behaviour and attitudes. There is, however, a severe lack of empirical evidence examining these concepts holistically or supporting such claims made in theory, policy and practice in the UK.



Nicola with Professor Mike Jenks on Graduation Day, September 2007.

The aim of Nicola's research was to address this lack of evidence and to determine the relationship, if any, between the quality of the built environment and social cohesion in English neighbourhoods. As quality is a multi-faceted concept, a further aim was to identify particular features of quality of the built environment most likely to support social cohesion in English neighbourhoods.

A number of data collection methods, including a national household survey, in-depth interviews and site survey were employed, as was a range of methods of analysis, including statistical and content analysis. The findings showed that features of quality of the built environment do have a significant and complex association with social cohesion, but that the strength and nature of the association differs between different features of quality.

The study showed that residents' perceptions of quality of the built environment are most consistently associated with social cohesion, followed by the level of maintenance of the built environment and, to a lesser extent, the extent of natural surveillance in, and attractiveness and character of, the neighbourhood. The evidence also highlights the aspects of social cohesion primarily associated with quality: residents' sense of community, feelings of trust and reciprocity, feelings of safety, and sense of place attachment.

The research showed that features of quality are inter-related and inter-dependent, and for a neighbourhood to be accurately described as high quality, it should have all of the features identified, and more, if the neighbourhood is to be also described as socially cohesive.

Nicola's thesis was shortlisted for the 'RIBA President's Awards for Research for Outstanding PhD Thesis 2007'. Nicola has presented her research at a number of national and international conferences and has published several journal articles, including one in *Town Planning Review*, with Prof. Mike Jenks, detailing her innovative method of neighbourhood identification and delineation. Nicola is actively building on her research interests in a number of ways including further development of the PhD research via forthcoming grant proposals and publications, a recent project commissioned by CABE completed with colleagues at Heriot-Watt University and employment as a researcher on high-profile EPSRC-funded projects (CityForm and I'DGO TOO).

6.0 Other OISD activities

During 2006-07 our work on developing Products Processes and Metrics for the Built Environment (PPM^{BE}) continued. This also led to the development of the major conference we ran in early 2008. The PPM^{BE} programme (led by Tim Dixon and Ray Ogden) is funding a two year programme of research and consultancy for business focusing on sustainability and corporate social responsibility issues. The programme focuses on three main areas:

- Products – developing and using sustainable building design and construction (Architecture)
- Processes – assessing and analysing the impact of sustainable building and construction on the real estate investment, development and construction processes, in terms of decision-making, asset management, knowledge management and value management (Real Estate and Construction)
- Metrics – measuring the impact of sustainable design and construction at building, city and regional economy scales (Planning and Energy Carbon Counting).

PPM^{BE} aims to:

- Create a formal network structure which links OISD, industry and public sector agencies (including regional development agencies) more closely, within a CSR and sustainability framework, focusing on products, processes and metrics in the built environment
- Build a research network and programme, which will enable closer working between OISD and industry, and other partners
- Develop new research and consultancy programmes with industry, government and NGOs for projects building on existing research
- Build on the strong CPD programme in which OISD is involved.

7.0 Research esteem measures for OISD

Examples

OISD staff have held or hold a number of high-profile visiting posts at universities/organisations in the UK and overseas. For example, the international Visiting Professorships of John Glasson and Mike Jenks. Dr Rajat Gupta is a Visiting Fellow at the Herberger Centre for Design Research, College of Design, Arizona State University, USA.

OISD is a member of several important UK Research Council consortia (for example, EPSRC ASSCUE, I'DGO I and II, SUBR:IM and City Form). Examples of international research collaboration include the programmes developed by Mike Jenks for compact cities (Thailand, Taiwan, Hong Kong, Philippines and Japan); by James Simmie for innovative cities (Toulouse, Stuttgart and Paris); by Georgia Butina-Watson, with DfID and British Council, for research on public participation in Thailand, Brazil and Mexico; and by Tim Dixon, with Australia and the US for work on sustainability appraisal in the property industry (RICS).

Many staff have been convenors of/or keynote speakers at UK and international conferences (e.g. Georgia Butina-Watson on Sub-Tropical Cities (Brisbane, 2006) and Rajat Gupta and John Glasson (Delhi, 2007).

Examples of memberships of key advisory panels/posts include: Stephen Ward, President, now Secretary General, International Planning History Society; John Raftery, member of the International Scientific Advisory Committee of the Australian CSIRO.

Staff also have editorial roles: for example, Nick French is the Editor of Property Investment and Finance, and John Glasson, the Editor of the Routledge 'Natural and Built Environment Series'. Georgia Butina-Watson, Clive Briffett, Franco Cheung, Peter Dent, Tim Dixon, Nick French, John Glasson, Anthony Lavers, Fergus Nicol, John Raftery, Alan Reeve, Elizabeth Wilson and Roger Zetter are all on the editorial boards of one or more key journals associated with the work of OISD.

Staff also serve on many policy and professional committees including: Simmie (ODPM/DCLG Planning Research Network); Georgia Butina-Watson (research advisor to the Slovene Regional Council); Anthony Lavers (Chair of the Society of Construction Law); Tim Dixon (EPSRC Infrastructure and Environment Strategic Advisory team (2004-2007) and SEEDA South East Excellence Advisory Board), and Aylin Orbasli (Chair ICOMOS-UK, Education and Training Committee).

OISD Collaborators

In the UK we have collaborative research programmes with:

- University of Strathclyde
- University of Sheffield
- University of Cardiff
- University of Manchester
- University of Southampton
- Heriot Watt University
- Edinburgh College of Art
- University of Salford
- University of Reading
- UCL
- University of Cambridge
- University of Oxford
- University of Warwick
- Salford University and
- De Montfort University.

In Europe, there are collaborative research projects with universities in

- Amsterdam,
- Hamburg,
- Milan,
- Toulouse,
- Paris and
- Stuttgart.

Further afield, we have for example, PhD Training agreements with Chulalongkorn and Thammasat, and collaborative research projects with:

- Moscow Academy of Sciences,
- Georgia State University,
- Waterloo University, and
- University of Melbourne,

We also have many links through visiting staff roles.

Our funders

Over the last two years these have included:

- Adams Hendry
- Aldbourne Associates
- Angel Town Com. Proj./Lambeth Co.
- AOSEC
- ATECMA Madride / EC
- Atkins Water
- Becker Industrial Coatings
- Berkleys
- BNFL
- BRE
- British Academy
- British Council
- British Know How Fund
- Brookstreet Des Roche Solicitors
- BUSC
- CABE (Cmsn. for Arch & Built Env)
- CAG Consultants
- Catnic Ltd
- CB Hillier Parker
- Cherwell Housing Trust
- Commission for Integrated Transport
- Communities Scotland
- Corporation of London
- Corus
- Cottsway Housing Association
- Countryside Agency
- CPRE
- Cranborne Chase and West Wiltshire Downs AONB
- CSIRO
- Culture South West
- Deborah
- Defra
- Department of Health
- DCLG
- DETR
- Development Trusts Association
- DFID
- DPU
- DTI
- DTZ
- Dutch Min. of Hous.
- East Oxford Action
- Energy Saving Trust
- English Heritage
- English Regions Network
- EPSRC
- ESRC
- EST
- ETSU
- European Commission
- European Environment Agency
- European Union
- FPD Savills Planning
- Geoffrey Osbourne Limited
- GL Assembly
- Gloucestershire County Council
- Halliburton Brown
- Heart of England TEC
- HEFCE
- Heriot-Watt University
- Heritage Lottery Fund
- Home Office
- Housing Corporation
- HSE
- Investment Property Forum
- Joseph Rowntree Foundation
- Kent County Council
- LB of Greenwich
- LGA
- Magnox Electric
- Manchester CC
- MVA Ltd.
- NAO
- National Grid Company
- National Wind Power
- NESTA
- Nuffield Foundation
- Millenium Block
- ODPM
- Oxford City Council
- Oxfordshire County Council
- Oxfordshire Housing Partnership
- People's Bank of China
- River Thames Society
- RTPi
- SGB Engineering
- Schoeck Isokorb Units
- SDC Swiss Agency
- SE Cultural Consortium
- SEEDA
- SEERA
- SEMLAC
- South Oxfordshire District Council
- South East Planning Aid
- South Hams DC
- South West Regional Assembly
- Spelthorne Borough Council
- Sport England
- Sussex Downs Conservation Brd.
- Sustrans
- Suzy Lamplugh Trust
- Terrapin
- Transport Activists Round Table
- Transport for London
- UK DFID
- Unite Ltd
- University College London
- UKAEA
- VROM
- Wadden Sea Forum
- West Dorset District Council
- West Oxfordshire DC
- West Oxfordshire Network
- Wilson Homes
- Wolverhampton Leisure Services
- WSP Bristol
- Wynns Ltd

8.0 Practising what we preach

As a research institute we are very conscious of the fact that our own behaviour on a personal and professional basis can have an impact on the environment. Researchers can, for example, clock up a large number of air miles on conference trips, and we all have an immediate impact on our surroundings in our journey to work if we use cars. Here are some simple examples of how we are trying to cut carbon emissions:

- OISD is a member of the UK Green Building Council.
- Brookes has a Green Travel Plan and a dedicated bus scheme with increasing use promoted to staff, students and community (Brookes bus scheme - Green Award gained).
- Waste management scheme and movement sensitive lighting in the Buckley building where the core of OISD is based.
- Oxford Brookes University electricity is supplied from 100% renewables.
- OISD members (Bridget Durning and David Shiers) are members of a University Steering Group developing a Brookes-wide Environmental Management System, and Rajat Gupta is a member of the University Environmental Policy Group whose role is to review and update Brookes' Environmental Policy, in the light of the new masterplan for redevelopment.
- The use of a carbon offset scheme (based in Thailand) by student and staff members within OISD.

9.0 Full OISD staff listings



A selection of the researchers who work in the Oxford Institute for Sustainable Development and contribute to the wider work of the School of the Built Environment

Environmental Assessment and Spatial Planning Group

Name	Job title	Department
Dr Clive Briffett	Research Fellow	Planning
Stephen Brown	Research Associate	Planning
Andrew Chadwick	Research Associate	Planning
Dr Bridget Durning	Senior Research Fellow and Manager (Research and Consultancy)	Planning
Jamie Elwin	Senior Lecturer	Planning
Peter Headicar	Reader In Transport Planning	Planning
Dr Robin Ganser	Senior Lecturer	Planning
Prof John Glasson	Emeritus Professor, Co-Director of Impact Assessment Unit, Founding Director of OISD	Planning
Tim Jones	Research Assistant	Planning
Dr Tim Marshall	Senior Lecturer	Planning
Dr Anastassios Perdicoulis	Visiting Research Fellow	Planning
Dr Jake Piper	Senior Research Fellow	Planning
Dr Augustin Rodriguez-Bachiller	Senior Lecturer	Planning
Prof. James Simmie	Professor of Innovation and Urban Competitiveness	Planning
Dr Mike Stubbs	Senior Lecturer	REC
Prof Riki Therivel	Visiting Professor	Planning
Philip Turner	Senior Lecturer	Planning/ REC
Dr Dave Valler	Reader, Director of Spatial Planning Unit	Planning
Joe Weston	Senior Lecturer	Planning
Elizabeth Wilson	Principal Lecturer	Planning
Dr Graham Wood	Reader, Co-Director of Impact Assessment Unit	Planning
Associated staff		
Lesley Downing	Research Affiliate	Independent researcher
Michael Esvelt	Project manager	Environmental Information Exchange, School of Life Sciences
Prof George Monbiot	Visiting Professor	
Tamara Schiopu	Local Foods Project Manager	Oxfordshire County Council
Dr Stewart Thompson	Senior Lecturer	School of Life Sciences

Urban Policy and International Development Group

Name	Job title	Department
Dr Sue Brownill	Principal Lecturer	Planning
Dr Rod Burgess	Senior Lecturer	Planning
Dr Juliet Carpenter	Senior Research Fellow	Planning
Dr Ellie Jupp	Research Fellow	Planning
Dr Beacon Mbiba	Senior Lecturer, Director of International Migration and Development Unit	Planning
Dr Brigitte Piquard	Senior Lecturer	Architecture
David Sanderson	Principal Lecturer	Architecture
Dr Nando Sigona	Research Associate	Planning
Prof James Simmie	Professor of Innovation and Urban Competitiveness	Planning
Prof Stephen Ward	Professor of Planning History Director of Urban Policy and Management Unit	Planning
Associated staff		
Prof Roger Zetter	Professor	The Refugee Studies Centre, University of Oxford

Urban Design Group

Name	Job title	Department
Prof Ian Bentley	Emeritus Professor	Architecture/JCUD
Dr Jon Cooper	Senior Lecturer	Planning/JCUD
Prof Brian Goodey	Emeritus Professor of Landscape Design	Planning/JCUD
Rebecca Kiddle	PGTA in Urban Design	JCUD
Dr Karl Kropf	Associate Lecturer and Research Associate	Architecture/ JCUD
Dr Alan Reeve	Senior Lecturer, Programme Leader JCUD	Planning/JCUD
Dr Roger Simmonds	Senior Lecturer	Planning/JCUD
Dr Michelle Thomas	Senior Lecturer	Planning/JCUD
Prof Georgia Butina-Watson	Head of Department, Director of Urban Design Group	Planning/JCUD

Architecture, Culture and Technology Group

Name	Job title	Department
Dr Bousmaha Baiche	Research Fellow	Architecture
Smita Chandiwala	Researcher	Architecture
Manuel Fuentes	Research Fellow	Architecture
Dr Rajat Gupta	Senior Lecturer, Co-Director of Architecture Unit	Architecture
Mary Hancock	Senior Lecturer	Architecture
Mike Hill	Senior Lecturer	Architecture/REC
Chris Kendrick	Senior Lecturer	Architecture
Maria Rita Kessler	Associate Lecturer	Architecture
Ronnie MacLellan	Senior Lecturer	Architecture
Revd Prof Michael Humphreys	Emeritus Professor	Architecture
Prof Byron Mikellides	Professor	Architecture
Prof Fergus Nicol	Professor	Architecture
Prof Raymond Ogden	Assistant Dean (Research), Director of Technology Unit	Architecture
Dr Aylin Orbasli	Senior Lecturer	Architecture
Prof Paul Oliver	Visiting Professor	Architecture
Dr Shibu Raman	Research Fellow	Architecture
Dr Hom Rijal	Research Assistant	Architecture
David Sanderson	Principal Lecturer	Architecture
Dr Fionn Stevenson	Reader, Co-Director of Architecture Unit	Architecture
Dr Marcel Vellinga	Senior Lecturer, Director of International Vernacular Architecture Unit	Architecture
Dr Nicholas Walliman	Senior Lecturer	Architecture
Xiaoxin Wang	Research Fellow	Architecture
Associated staff		
Dr Rob Beale	Regional Director	School of Technology
Maurice Mitchell	Lecturer	Department Of Architecture, University of North London

Sustainable Urban Environments

Name	Job title	Department
Prof Elizabeth Burton	Professor, Director of Wellbeing in Sustainable Environments Unit	Architecture
Dr Carol Dair	Research Fellow, Director of Cities Unit	Architecture
Dr Nicola Dempsey	Postdoctoral Research Assistant	Architecture
Prof Mike Jenks	Emeritus Professor	Architecture
Lynne Mitchell	Research Fellow	Architecture
Dr Shibu Raman	Research Fellow	Architecture
Associated staff		
Prof Tim Blackman	Head of School of Applied Social Sciences	Durham University
Morag Lindsey	Research Assistant	
Rita Newton	Senior Lecturer	SURFACE, University of Salford
Dr Bart Sheehan	Associate Clinical Professor in Old Age Psychiatry	Medical School, Warwick University
Prof Katie Williams	Reader, Director of SUE and Cities Unit	University of the West of England

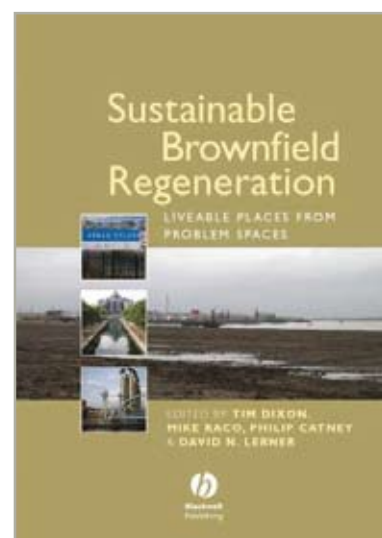
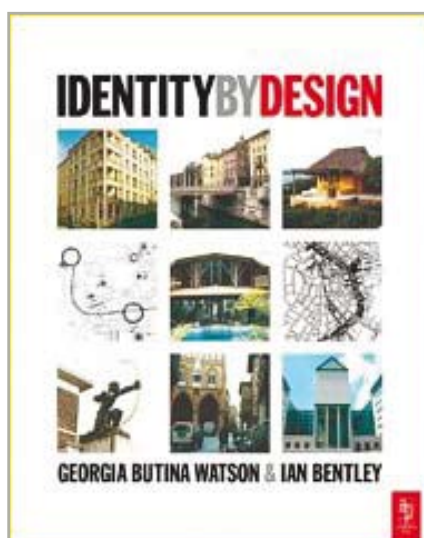
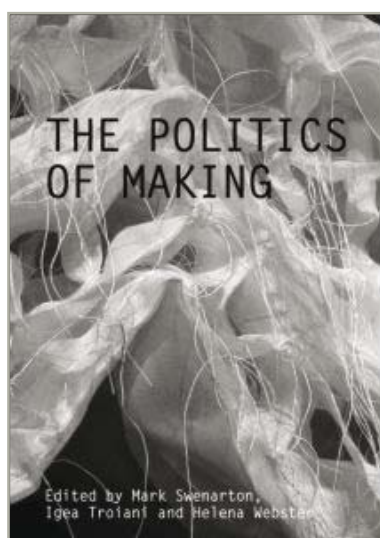
International Land Markets

Name	Job title	Department
Dr Albert Cao	Senior Lecturer	REC
Dr Franco Cheung	Senior Lecturer	REC
Dr Youngha Cho	Senior Lecturer	REC
Dr Andrea Colantonio	Research Fellow	REC
Peter Dent	Head of Department	REC
Prof Tim Dixon	Professor of Real Estate, Director of OISD	REC
Gina Ennis-Reynolds	Principal Lecturer	REC
Prof Nick French	Professor of Real Estate	REC
Richard Grover	Principal Lecturer	REC
Mike Hill	Senior Lecturer	REC
Dr Ramin Keivani,	Research Co-ordinator and Tutor, Director of International Land Markets Group	REC
Dr Esra Kurul	Senior Lecturer	REC
Prof Anthony Lavers	Visiting Professor	REC
Prof Argus MacIntosh	Visiting Professor	REC
Prof Paul McNamara	Visiting Professor	REC

Dr Noriko Otsuka	Postdoctoral Research Assistant	REC
Prof John Raftery	Dean of the School of the Built Environment	SoBE
Dr Claire Roberts	Lecturer	REC
David Shiers	Senior Lecturer	REC
Dr Sally Sims	Lecturer	REC
Prof Mikhail Soloviev	Visiting Professor	REC
Vivienne Spurge	Senior Lecturer	REC
Dr Mike Stubbs	Senior Lecturer	REC
Rev Brian Wood	Senior Lecturer	REC
Dr Xu Ye	Lecturer	REC
Associated staff from other Schools		
Dr Rob Beale	Regional Director	School of Technology

10.0 OISD Publications

Examples of some of the books published by OISD and related School of the Built Environment staff members.



The publications in the following lists cover the period September 2006 to September 2007.

Environmental Assessment and Spatial Planning (EASP)

OIDSD: IAU

Journals

2006

Evans, J., Wood, G. and Miller, A. (2006). The risk-assessment policy gap: an example from the UK contaminated land regime. *Environment International* 32 (8), pp.1066-1071.

Simmie, J. and Strambach, S. (2006). Institutional perspective. *Journal of Knowledge Management* 10 (5), pp.26-40.

Therivel, R. (2006). Sustainability integration and assessment. *Environmental Assessment Policy and Management* 8 (3), pp.281-298.

2007

Durning, B. (2007). Challenges in the recruitment and retention of professional planners in English planning authorities. *Planning Practice and Research* 22 (1), pp.95-110.

Marshall, T. (2007). After Structure planning: the new sub-regional planning in England. *European Planning Studies* 15 (1), pp.107-132.

Marshall, T. and Inch, A. (2007). A review of recent critical planning studies of UK Planning. *International Planning Studies* 12 (1), pp.77-86.

Perdicoulis, A. et al. (2007). The handling of causality in SEA guidance. *Environmental Impact Assessment Review* 27, pp.176-187.

Therivel, R. and Ross, B. (2007). Cumulative effects assessment: Does scale matter? *Environmental Impact Assessment Review* 27 (5), pp.365-385.

Conference Papers

2007

Broderick, M., Durning, B. and Glasson, J. (2007). Environmental impact assessment for decommissioning regulations 1999 (EIADR99): A review of the implementation of the regulations in Great Britain. In: *UK Decommissioning and Waste Management Conference*. Penrith, Cumbria.

Durning, B. (2007). Strategic EMS - a future governance and legislative tool. In: *Institute for Environmental Management and Assessment Environmental Management Systems Forum*. London.

Durning, B. and Dempsey, N. (2007). Making spaces in a flux: do planners in English planning authorities have the skills and knowledge capacity to do it? In: *Planning Research Conference*. Herriot Watt University.

Glasson, J. (2007). A Competitive and sustainable Perth, WA,. In: *Australian Annual Innovation Conference*. Perth.

Glasson, J. (2007). Towards an integrated and sustainable Environmental Assessment. In: *Barton Wilmore Annual Conference*, Natural History Museum. Natural History Museum, London.

Perdicoulis, A. (2007). Medical doctor or mathematician? role models for spatial planners. In: *International Conference "New concepts and approaches for urban and regional policy planning?"* Leuven, Belgium.

Simmie, J. (2007). The evolution of city region economies: innovation, adaptation and path dependence. *St Catherine's College, Cambridge*.

Simmie, J. (2007). Regional pasts, regional futures: path dependency and innovation. In: *National Endowment for Science, Technology and the Arts Summit "Making Innovative Places. research on Clusters: Theories, Policies and Case Studies"*. Cheltenham, Oxford: E. Elgar.

Reports

2006

Briffet, C. (2006). *Conservation Strategy for the Parish of South Hinksey*.

Simmie, J., Blake, N., Brownill, S., Glasson, J., Holt, R., Marshall, T., Martin, R., Westwood, A., Wood, P. (2006). *The economic performance of London and the Core Cities*. Oxford Brookes University, Department of Planning.

Wilson, E. with Land Use Consultants, CAG Consultants and Gardiner & Theobald. (2006). *Adapting to climate change: a good practice guide for sustainable communities*. London: Department for Environment, Food and Rural Affairs (DEFRA).

Wood, D., Glasson, J., Carlsen, J., Hopkins, D. (2006). *Economic evaluation of tourism for natural areas - development of a toolkit approach*. CRC for Sustainable Tourism Pty Ltd.

2007

Glasson, J. et al. (2007). *The economic ecology of small business in Oxfordshire*. London: Federation of Small Businesses.

Glasson, J., Durning, B. and Elsworth, T. (2007). *JET Site (Culham, Oxfordshire), end state consultation and recommendations to the JET Site Stakeholders Group UKAEA*. UKAEA.

- Glasson, J., Lawton Smith, H. and Chadwick, A. (2007). *Enterprise and innovation: the Oxfordshire Model*. Oxford: Oxford University
- Higgins, M., Brown, C., Prior, A., McCarthy, J., Hachman, V., Durning, B. (2007). *Scottish planning authorities skills assessment final report*. Improvement Agency.
- Mitchell, R., Morecroft, M., Acreman, M., Ross, L.C., Maclean, I.M.D., Crick Headington, Q.P., Rehfish, M.M., Piper, J., Wilson, E. (forthcoming 2007). *England Biodiversity Strategy - towards adaptation to climate change*. Report to DEFRA.
- Piper, J. and Wilson, E. (2007). *Buildings, construction and planning*. In: Arkell, B., Darch, G. and McEntee, P., eds. *Preparing for a changing climate in Northern Ireland*. SNIFFER.

Magazine/News Articles

2006

- Therivel, R. (2006). *Appropriate Assessment of Land Use Plans - preparing for the coming storm*. *Town and Country Planning*, pp.171-176.
- Therivel, R. (2006). *Towards Appropriate Assessment of Plans*. *Town and Country Planning*.

Books

2006

- Glasson, J. and Marshall, T. (eds.) (2007). *Regional Planning*. Routledge, London.
- Glasson, J., Schmidt, M. and Helbron, H. (2007). *Thresholds and Standards in EIA*. Berlin: Springer-Verlag.
- Simmie, J. (2006). The contribution of clustering to innovation: from Porter 1 agglomeration to Porter II export base theories *Charlie Karlsson Handbook of*
- Wood, A, Valler, D, Phelps, N, Raco, M, Shirlow, P. (2006). The limits to devolution in P Benneworth, I Hardill, M Baker and L Budd (eds) *The Rise of the English Regions*. Oxford: Routledge, pp.68-86.

2007

- Simmie, J. and Carpenter, J. (2007). *Path Dependence and the Evolution of City Regional Economies*. Department of Planning Working Paper.
- Wilson, E. (2007). *Adaptation Strategies for Climate Change in the Urban Environment (ASCCUE). Building Knowledge for a Changing Climate*. Newcastle University.

OECD:SPU

Conference Papers

2006

- Phelps, N., Wood, A. and Valler, D. (2006). Governing post suburban growth. In: *World Planning Schools Conference*. Mexico.

2007

- Ganser, R. (2007). Global Cities and their Rural Hinterland - Challenges for Spatial Planning. In: *Presentation and Publication in the scope of 7th International Conference on Urban Planning and Environment*. Bangkok, Thailand.
- Ganser, R. (2007). Sustainability Indicators for the Efficient use of Land - Optimising Densities in Urban and Rural Areas. In: *Presentation and Publication in the scope of CABERNET 2007 2nd International Conference on Managing Urban Land*. Stuttgart.
- Valler, D. and Wood, A. (2007). Conceptualizing local and regional economic development: policy, Practice and Profession. In: *Association of American Geographers Conference*. San Francisco.

Books

2006

- Simmie, J. et al. (2006). *State of the English Cities*. London: ODPM.

Urban Policy and International Development Group (UPID)

OECD: UPM

Journal Articles

2006

- Carpenter, J. (2006). Addressing Europe's urban challenges: lessons from the EU URBAN community initiative. *Urban Studies* 43 (12), pp.2145-2162.
- Ward, S. (2006). A historian's view, invited comment on paper by Chris Webster. *Town Planning Review* 76 (4), pp.495-496.

2007

Brownill, S. (2007). The End of Holistic Regeneration? *Local Economy* 22 (3), pp.261-278.

Brownill, S. and Carpenter, J. (2007). Participation and Planning: Dichotomies, rationalities and strategies for power. *Town Planning Review* 78 (4), pp.401-428.

Brownill, S. and Carpenter, J. (2007). Increasing Participation in Planning: Emergent Experiences of the Reformed Planning System in England. *Planning Practice and Research* 22 (4), pp.619-634.

Jupp, E. (2007). Participation, local knowledge and empowerment: researching public space with young people. *Environment and Planning A* 39 (12), pp.2832-2844

Ward, S. V. (2007). Cross-national learning in the formation of British planning policies 1940-99: a comparison of the Barlow Buchanan and Rogers Report. *Town Planning Review* 78 (3), pp.369-400.

Reports

2006

Carpenter, J., Simmie, J. and Chadwick, A. (2006). *The Economic Performance of English Cities*. London: Department of Communities and Local Government.

Carpenter, J., Simmie, J., Martin, R., Chadwick, A. (2006). *State of the English Cities: The competitive economic performance of English Cities*. Office of the Deputy Prime Minister.

Books

2006

Ward, S. (2006). Cities are fun!: inventing and spreading the Baltimore model of cultural urbanism. In: Monclus, J., Monclus, F. J. and Guardia, M. (eds.) *Culture, Urbanism, Planning*. Aldershot: Ashgate.

Ward, S. (2006). City marketing: origin and critique. In: Oswalt, P. (ed.) *Shrinking Cities, Vol2: Interventions*. Vol. 2. Berlin: Hanje Cantz, pp.724-729.

2007

Ward, S. (2007). Promoting the Olympic City. In: Gold, J. R. and Gold, M. M. (eds.) *Olympic Cities*. London: Spon, pp.120-137.

Conference Papers

2006

Brownill, S. and Carpenter, J. (2006). Urban Policy and Urban Childhoods. In: *IBG Conference*.

Carpenter, J. (2006). Models of Democracy and Strategies of Participation. In: *World Planning Schools Conference*. Mexico City.

Ward, S. (2006). The Garden City: an enduring model for sustainable urbanisation. In: *China Planning Network Conference*. Beijing, China.

Ward, S. (2006). The giant city and the challenge for planning - Inaugural address. In: *International Planning History Conference*. New Delhi, India.

Ward, S. (2006). The globalisation of the Baltimore model of waterfront development: a case study of developer as agent of transnational diffusion. In: *International Planning History Conference*. New Delhi, India.

2007

Brownill, S. and Carpenter, J. (2007). Fit for Purpose? Governance and Sustainable Communities in the Thames Gateway. In: *Association of American Geographers (AAG) Conference*. San Francisco.

Brownill, S., Carpenter, J. and Dixon, T. (2007). Fit for Purpose? Multilevel governance in the Thames Gateway. In: *European Urban Research Association 10th Anniversary Conference*. University of Glasgow, Scotland.

Ward, S. (2007). City identity, image and promotion: a historian's perspective. In: *Conference on City Identity and Image*. Hagen, Germany.

Magazine/News Articles

2006

Ward, S. (2006). Obituary: Jane Jacobs. *The Independent*, 3.6.2006, p.42.

2007

Brownill, S. and Carpenter, J. (2007). New, improved participatory planning? The Planning Aid experience. *Town and Country Planning*. January, pp.26-29.

Journals

2006

Frediani, A. (2006). Amartya Sen, the World Bank, and the Redress of Urban Poverty: A Brazilian Case Study. *Journal of Human Development* 8 (1), pp. 133-152.

Mbiba, B. (2006). Untold Stories: The Commission for Africa and Zimbabwe. *The Round Table* 95 (384), pp.201-218.

Sigona, N. and Bravi, L. (2006). Educazione e rieducazione nei campi per “nomadi”. *Studi Emigrazione* 43 (164), pp.857-874.

Sigona, N., Griffiths, D. and Zetter, R. (2006). Integrative paradigms, marginal reality: Refugee Community Organisations and dispersal in Britain. *Journal of Ethnic and Migration Studies* 32 (5), pp.881-898.

Books

2006

Piquard, B. (2006). Gender en Humanitaire Actie. In: *Vrouwen, Oorlog en Vrede*. Bruxelles: Commissie Vrouwen en Ontwikkeling.

Piquard, B. (2006). Towards a better understanding of the culture and heritage of war. In: Gibbons, P. and Piquard, B. (eds.) *Working in Conflict, Working on Conflict*. Universitat de duesto Press.

2007

Piquard, B. (2007). The politics of the West Bank Wall: Symbolic Violence and Spaciocide. In: Swenarton, M., Troiani, I. and Webster, H. (eds.) *The Politics of Making*. Routledge

Reports

2006

Mbiba, B. (ed.) (2006). *Death and the city in East and Southern Africa*. Working Papers 10-13. London: The Urban and Peri-Urban Research network (Peri-NET).

Piquard, B. (2006). *Les questions de genre dans les Actions Humanitaires en zones de conflit et dans la recherche d'une paix durable*. In: Femmes, guerre et paix. Bruxelles: Commission femmes et Developement.

Conference Papers

2006

Gibbons, P. and Piquard, B. (eds.) (2006). *Working in conflict, working on conflict: humanitarian dilemmas and challenges*. HumanitarianNet: thematic network on humanitarian development studies. Bilbao: University of Duesto.

2007

Mbiba, B. (2007). Political Economies of Displacement in Post-2000 Zimbabwe. In: *The well being of Zimbabwean Children in UK and the future of Zimbabwe*. London.

Sigona, N. (2007). Cittadinanze imperfette. *Reapporto sulla discriminazione razziale di rom e Sinti in Italia*. Napoli: Spataco.

Sigona, N. (2007). Lo Scandalo dell'alterita: Rom e sinti in Italia.

Architecture, Culture and Technology Group (ACT)

OIDSD:Architecture

Journal Articles

2006

Kuller, R., Ballal, S., Laike, T., Mikellides, B., Tonello, G. (2006). The impact of light and colour on psychological mood: a cross cultural study of indoor work environments (England, Sweden, Saudi Arabia and Argentina). *Ergonomics* 49 (12), pp.1495-1507.

Sassi, P. (2006). Architecture and the Culture of Sustainability - Buildings as learning tools. *Made* (3), pp.48-57

Upadhyay, A., Yoshida, H. and Rijal, H. (2006). Climate responsive building design in the Kathmandu valley. *Journal of Asian Architecture and Building Engineering* 5 (1), pp.169-176.

2007

Humphreys, M. A. and Hancock, M. (2007). Do people like to feel 'neutral'? Exploring the variation of the desired sensation on the ASHRAE scale. *Energy and Buildings* 39 (7), pp.867-874.

Humphreys, M. A., Nicol, J. F. and Raja, I. A. (2007). Field Studies of indoor thermal comfort and the progress of the adaptive approach *Journal of Advances on Building Energy Research* 1, pp.55-88.

Majima, M., Umemiya, N., Yoshida, H., Rijal, H. (2007). Thermal comfort of traditional narrow alleys in an urban area: Survey of Nishijin district in Kyoto. *Environmental Eng A1J* (622), pp.41-48.

Nicol, F. (2007). Comfort and Energy Use in Buildings: Getting them Right. *Energy and Buildings* 39 (7), pp.737-739.

Rijal, H. B. et al. (2007). Development of an adaptive window opening algorithm to predict the thermal comfort energy use and over-heating in buildings. *Building Performance Simulation* 1 (1), pp.17-30.

Swenarton, M. (2007). Houses of paper and brown cardboard: Neville Chamberlain and the establishment of the Building Research Station in 1925. *Planning Perspectives* 22 (3), pp.257-281.

Webster, H. (2007). The Analytics of Power: Re-presenting the Design Jury. *Journal of Architectural Education* 60 (3), pp.21-27.

Reports

2006

Gupta, R., Roaf, S. and Raftery, J. (2006). Applying CO₂ reduction strategies to existing UK dwellings using GIS-based modelling: a case study in Oxford. *Findings in Built and Rural Environment. RICS journal*.

Gupta, R. and Santana, D. (2006). Ecohouses: design and teaching tools. *Sustainable Habitat Design Advisor*. European Commission (funded).

2007

Gupta, R and Chandiwala, S. (2007). *A case study of an Academy building: City of London Academy*. Seacourt Publishers, Oxford. ISBN 978-1-873640-61-6

Gupta, R and Chandiwala, S. (2007). *A case study of a FE building: Merton College, London*. Seacourt Publishers, Oxford.

Gupta, R. and Chandiwala, S. (2007). *How to Commission Sustainable Construction in Further Education Colleges. Building for the Future - Sustainable Construction for Professionals*. Association of South East Colleges (AOSEC).

Gupta, R. and Chandiwala, S. (2007). *How to conserve energy in further education colleges*. Oxford: Association of South East Colleges (AOSEC).

Gupta, R and Chandiwala, S. (2007). *How to conserve energy in further education colleges*. Seacourt Publishers, Oxford. ISBN 978-1-873640-59-3

Morgan, C. and Stevenson, F. (2007). *SEDA Design Guide No.1: Design and Detailing for Deconstruction*. Watford: BRE.

Stevenson, F. (2007). 305 Caledonia Road, Gorbals, Glasgow, Phase 1. In: Williams, N., ed. *Sustainable Housing Design Guide for Scotland (revised)*.

Stevenson, F. (2007). *An evaluation of earth masonry in affordable housing. Précis No.88*. Edinburgh: Communities Scotland.

Stevenson, F. (2007). James Nisbet Street phase 1-3. In: Williams, N., ed. *Sustainable Housing Design Guide for Scotland (revised)*. Communities Scotland.

Stevenson, F. (2007). *A Post Occupancy Evaluation of the Dundee Maggie Centre*. Glasgow: SUST - The Lighthouse Centre for Architecture and Design.

Stevenson, F. and Williams, N. (2007). *Sustainable Housing Guide for Scotland (revised)*. Edinburgh: Communities Scotland.

Conference Papers

2006

Rijal, H. and Yoshida, H. (2006). Winter thermal comfort of residents in the Himalayan region of Nepal. In: *International Conference on Comfort and Energy Use in Buildings - Getting them right*. Windsor.

Swenarton, M. (2006). Breeze blocks and Bolshevism: housing policy and the origins of the Building Research Station 1917-21. In: *Second International Congress on Construction History*. Cambridge.

2007

Fuentes, M., Gupta, R. and Roof, S. (2007). Solar Cities and sustainable buildings to reduce CO₂ emissions. In: *Enviro-Pro*. Mexico City.

Gupta, R. (2007). Back to the Future: Lessons from vernacular architecture. In: *The Vernacular: A Critical Examination of a Concept*. Oxford Brookes, Oxford.

Gupta, R. (2007). DECoRum a GIS based carbon counting and carbon-reduction model. In: *Venture fest 2007*. Rutherford Appleton Lab - Didcot.

Gupta, R. (2007). DECoRum tool to track energy use and carbon emissions from residential buildings. In: *ICLEI - Local Renewables 2007: Powerful local action for secure and sustainable energy*. Freiburg, Germany.

Gupta, R. (2007). Leading by example: post occupancy evaluation studies of city council-owned non-domestic buildings in Oxford to assess the potential for reducing CO₂ emissions. In: *24th International Conference on Passive and Low Energy Architecture (PLEA)*. Singapore.

Gupta, R. (2007). A Review of initiatives to reduce energy-related CO₂ emissions from the city of Oxford: Past, Present and Future. In: *ECEEE 2007*. France.

Gupta, R. (2007). The importance of carbon footprint of buildings. Keynote. *Achieving low carbon buildings: essential to tackling climate change*. 10-11 July 2007, Mayfair Centre, London.

Gupta, R. (2007). *Using GIS-based modelling to assess the carbon impacts of urban developments*. 19 April 2007. Global Institute of Sustainability, Arizona State University, USA.

Gupta, R. and Chandiwala, S. (2007). Sustainable construction in FE colleges. In: *Building for the Future: Sustainable Construction for Professionals*. Reading.

Nicol, J.F. (2007). Air conditioning and the low carbon cooling challenge: A research Agenda for the future of the planet. In: *ISHVAC07 5th International Symposium on Heating Ventilating and Air-conditioning*. Tsinghua University, Beijing.

Nicol, J.F., Rijal, H.B., Humphreys, M.A., Tuohy, P. (2007). Characterising the use of windows in thermal simulation. In: *2nd PALENC Conference and 28th AIVC Conference on Building Low Energy Cooling and Advance Ventilation Technologies in the 21st Century*. Greece.

Rijal, H.B., Nicol, J.F., Humphreys, M.A., Raja, L.A. (2007). Use of Windows, Fans and Doors to Control the Indoor Environment in Pakistan: Developing a behavioural model for use in thermal simulations. In: *2nd International Conference of Environmentally Sustainable Development - ESDev 2007 CIIT Abbottabad*. Pakistan. Results and Thermal

Rijal, H.B., Tuohy, P., Nicol, J.F., Humphreys, M.A., Clarke, J. (2007). A window opening algorithm and UK office temperature: Field Results and thermal simulation. In: *Proceedings of the 10th International IBPSA Conference*. Beijing.

Stevenson, F., Humphreys, G. and Howells, L. (2007). The Dundee Maggie Centre: Developing Evaluation for Promoting Well-being in small-scale Palliative Healthcare Environments In: *World Congress for Health and Design*. Glasgow.

Tuohy, P., Rijal, H.B., Humphreys, M.A., Nicol, J.F., Samuel, A., Clarke, J. (2007). Comfort driven adaptive window opening behaviour and the influence of building design. In: *10th International IBPSA Conference*. Beijing.

Varga, M., Lopes, C., Nicol, J.F., Pagliano, L. (2007). Introducing sustainable summer comfort in the market: Success factors and barriers. In: *European Council for and Energy Efficient Economy (ECEEE) Summer Study*. Nice.

Books

2006

Stevenson, F. (2006). Natural Materiality - The People's Choice. In: Broadbent, G. and Brebbia, C. A. (eds.) *Eco-architecture: harmonisation between architecture and nature*. Wessex Institute of Technology, pp.257-266.

2007

Nicol, J. F. and Roaf, S. (2007). Progress in passive cooling: adaptive thermal comfort and passive architecture. In: Santamouris, M. (ed.) *Advances in Passive Cooling*. London: Earthscan.

Roaf, S. and Gupta, R. (2007). Safe as Solar Houses: No need to go Nuclear. In: Day, L. (ed.) *Nuclear Power: Unnecessary, dangerous and expensive: the case for a non-nuclear energy strategy in the UK*. Norwich: Hussey Knights, pp.5-7.

Roaf, S., and Gupta, R. (2007). Solar power: energy from the sun. In: Elliott, D. ed. *Sustainable energy: opportunities and limitations*. Palgrave MacMillan. pp 84-107. ISBN 978-0-2300-2002-3

Webster, H. (2007). Auschwitz State Museum: collective memory and the contested landscape. In: Webster, H., Troiani, I. and Swenarton, M. (eds.) *Applied Thermal Engineering*. London: Routledge.

OISD: International Vernacular Architecture

Journal Articles

2007

Vellinga, M. (2007). Anthropology and the Materiality of Architecture. *American Ethnologist* 34 (4), pp.756-766.

Vellinga, M. (2007). The inventiveness of tradition: Vernacular architecture and the future. *Perspectives in Vernacular Architecture* 14 (2), pp.115-128.

Magazine/News Articles

2007

Vellinga, M. (2007). Living Heritage: Vernacular Architecture in China. *IISAS newsletter*.

Books

2007

Vellinga, M., Oliver, P. and Bridge, A. (2007). *Atlas of Vernacular Architecture of the World*. London and New York: Taylor and Francis.

OIDSD: Technology

Journal Articles

2006

Ogden, R., Grubb, P.J., Lawson, R.M., Pedreschi, R. (2006). Developments in light steel composites in floors and roofs. *The Structural Engineer* 84 (21), pp.44-50.

2007

Baiche, B. and Kendrick, C. (2007). The development of a composite masonry unit for the UK Construction industry. *Masonry International* 20 (1), pp.11-28.

Baiche, B., Kendrick, C. and Ogden, R. (2007). Air-tightness in the recent Part L of the Building Regulations; the case of buildings with metal envelopes. *Structural Survey* 25 (5), pp.355-373.

Baiche, B. and Kendrick, C. (2007). The development of a composite masonry unit for the UK construction industry. *Masonry International* 20 (1), pp.11-28.

Hadjri, K., Osmani, M., Baiche, B., Chifunda, C. (2007). Attitudes towards earth building for housing provision in Zambia. *Engineering Sustainability* 160 (ES3), pp.141-149.

Havenith, G., Richards, M. and Wang, X. (2007). Apparent latent heat transfer of evaporation from clothing: attenuation and heat pipe effects. *Journal of Applied Physiology* 104 (1), pp.142-149.

Wang, X., Walliman, N., Ogden, R., Kendrick, C. (2007). VIP and their applications in buildings: a review. *Construction Materials* 160 (4), pp.145-153.

Wang, X. and Yuan, X. (2007). Reuse of condensed water to improve performance of an air cycle refrigeration system for transport applications. *Applied Energy* 84 (9), pp.874-881

Reports

2006

Kendrick, C. (2006). Final Report. Effect of solar reflective coatings on air conditioning loads for a retail shed. Beckers Industrial Coatings.

Books

2006

Walliman, N. (2006). *Dummies Guide to Self Build and Renovation*. John Wiley & Sons.

Walliman, N. (2006). *Social Research Methods*. Sage course companions Sage

Conference Papers

2006

Havenith, G. and Wang, X. (2006). Evaporative Cooling in Protective Clothing. In: *3rd European Conference on Protective Clothing (ECPC)*. Poland.

Lawson, M. and Ogden, R. (2006). Hybrid Light Steel panel and Modular. In: *Adaptables 2006 Conference*. Eindhoven, The Netherlands.

Ogden, R. and Kendrick, C. (2006). VIP Cladding panels for Buildings: Applications and Conceptual Solutions. In: *7th International Vacuum Insulation Symposium*. Zurich.

2007

Wang, X. (2007). An innovative thermal insulation material for building envelopes. In: *The 22nd International Congress of Refrigeration*.

Sustainable Urban Environments Group (SUE)

OIDSD: Cities

Journal Articles

2006

Dair, C. and Williams, K. (2006). What is stopping sustainable building in England? Barriers experienced by stakeholders in delivering sustainable developments. *Sustainable Development* 15 (3), pp.135-147.

2007

Dair, C. (2007). Urban Ethic: Design in the Contemporary City. *Planning Theory and Practice* 8 (4), pp.559-563.

Dair, C. and Williams, K. (2007). A framework for assessing the sustainability of brownfield developments. *Journal of Environmental Planning and Management* 50 (1), pp.23-40.

Gaston, K. J., Fuller, R.A., Loram, A., MacDonald, C., Power, S., Dempsey, N. (2007). Urban Domestic Gardens (XI) Variation in urban wildlife gardening in the UK. *Biodiversity and Conservation* 16 (11), pp. 3227-3238.

Jenks, M. (2007). The compact and sustainable city: avoiding the 'Day after Tomorrow'. In: *Intellectual Discourse Lecture*. University Teknologi Malaysia, Johor.

Jenks, M. (2007). The compact city and sustainable urban design. In: *National Seminar on Compact Cities*. Universiti Teknologi Malaysia, Johor, Malaysia.

Jenks, M. and Dempsey, N. (2007). Defining the neighbourhood: challenges for empirical research. *Town Planning Review* 78 (2), pp.153-178.

Williams, K. and Lindsay, M. (2007). The Extent and Nature of Sustainable Building in England: An Analysis of Progress. *Planning Theory and Practice* 8 (1), pp.27-45.

Reports

2007

Orbasli, A. (2007). Guidelines for preparing Management Plans for Prehistoric Sites. In: Doughty, L. and Hodder, I. (eds.) *Management, Education and Prehistory*. Vol. 1, The Temper Project. Cambridge: McDonald Institute Monograph.

Chowne, P., Kotsakis, K. and Orbasli, A. (2007). Management Plans for Prehistoric Sites. In: Doughty, L. and Hodder, I. (eds.) *Management, Education and Prehistory*. Vol. 1, The Temper Project. Cambridge: McDonald Institute Monograph.

Doughty, L. and Orbasli, A. (2007). Visitor Management & Interpretation at Prehistoric Sites. In: Doughty, L. and Hodder, I. (eds.) *Management, Education and Prehistory*. Vol. 1, The Temper Project. Cambridge: McDonald Institute Monograph.

Conference Papers

2006

Jenks, M. (2006). The compact city: a sustainable context for urban development. In: *7th International Conference Architecture and Housing Development*. Ajman University of Science and Technology, UAE.

Jenks, M. (2006). Il pui lungo errore del mondo? Sustainable urban design and the renovation of social housing estates - a disciplinary problem. In: *Keynote speaker at Politecnico di Milano*. Milan.

Jenks, M. (2006). The sustainable city: myth or reality? In: *Keynote speaker at Oxford Civic Society*. St Annes College, Oxford.

2007

Bramley, G., Brown, C., Dempsey, N., Power, S. (2007). Urban Form and Social Sustainability: planning for happy, cohesive and 'vital' communities? In: *European Urban Research Association (EURA) 10th Anniversary Conference*. Glasgow.

Bramley, G., Brown, C., Dempsey, N., Watkins, D. (2007). Planning for Happiness: Evidence on the Social Dimension of Urban Sustainability. In: *RIBA Futures Fair*. London.

Bramley, G., Brown, C., Power, S., Dempsey, N. (2007). Urban form and social sustainability: calibrating the relationships for existing urban areas. In: *Thinking Spaces for Making Places: Planning Research Conference 2007*. Herriot Watt University, Edinburgh.

Bramley, G., Brown, C., Power, S., Dempsey, N. (2007). Urban form, social sustainability and neighbourhood housing markets. In: *Thinking Spaces for Making Places: Planning Research Conference 2007*. Herriot Watt University, Edinburgh.

Dair, C. and Williams, K. (2007). What is stopping sustainable development in England? Barriers experienced by stakeholders in delivering sustainable developments. In: *Thinking Spaces for Making Places: Planning Research Conference 2007*. Herriot Watt University, Edinburgh.

Dempsey, N. (2007). Are high quality neighbourhoods socially sustainable? Methodological challenges of unpacking multidimensional concepts. In: *European Urban Research Association EURA 10th Anniversary Conference: The Vital City*. Glasgow.

Dempsey, N. (2007). Do quality places put smiles on faces? Assessing the relationship between the quality of the built environment and social cohesion. In: *Thinking Spaces, Making Places: Planning Research Conference 2007*. Herriot Watt University, Edinburgh.

Dempsey, N., Brown, C. and Bramley, G. (2007). Focussing on social sustainability: what residents tell us about urban form. In: *Thinking Spaces for Making Places: Planning Research Conference 2007*. Herriot Watt University, Edinburgh.

Jenks, M. and Kozak, D. (2007). 'World Cities' and Urban Form: fragmented or polycentric and sustainable? In: *7th International Symposium of the International Urban Planning and Environment Association: World Class Cities: Environmental Impacts and Planning Opportunities*. Bangkok.

Books

2006

Orbasli, A. (2006). Tourism and the 'Islamic' Town: social change, conservation and tourism in traditional settlements. In: Daher, R. (ed.) *Travellers, Pilgrims and Traders: Tourism in the Middle East*. Channel View.

2007

Jenks, M. and Jones, C. A. (eds.) (2007). *Dimensions of the Sustainable City*. London: Springer.

Orbasli, A. (2007). *Architectural Conservation*. Oxford: Blackwell.

Journal Articles

2007

Burton, E. and Torrington, J. (2007). Designing environments suitable for older people. *CME Geriatric Medicine* 9(2), pp.39-45.

Newton, R., Burton, E. and Ward-Thompson, C. (2007). Outdoor Environments -access for older people. *Access by Design* 111, pp.27-31.

Conference Papers

2006

Burton, E. (2006). Suburbs for the future: neighbourhoods for life. In: *Suburbs for the Future*. Crawley: RIBA SE.

Sheehan, B. et al. (2006). Designing to Optimise Mental Health in Care Homes for Older People. In: *Design for Older People: SPARC Workshop*. Coventry University.

2007

Burton, E. (2007). Designing Neighbourhoods for IIFE. In: *Older People's Mental Well-Being Conference*. Manchester.

Burton, E. and Mitchell, L. (2007). Designing neighbourhoods for older people. In: *Invited Paper at the Geographies of Practice and the Urban Outdoors Session of the Association of American Geographers Annual Meeting*. San Francisco.

Mitchell, L. (2007). Neighbourhoods for Life, Aware Homes, Aware Care. Transforming communities, environments and technologies for ageing-in-place. In: *1st Conference of the Nestling Project*. Dundalk Institute of Technology, Ireland.

Mitchell, L. (2007). Neighbourhoods for Life: The Ageing Well Network. In: *The Ageing Well Network*. Naas, Co Kildare, Ireland.

Mitchell, L. and Burton, E. (2007). Neighbourhoods for Life. In: *Association of American Geographers Annual Meeting*. San Francisco.

Magazine/News Articles

2007

Mitchell, L. (2007). Neighbourhoods for Life: The outdoor environment: a three year project to study the specific needs of older people particularly those with dementia. *Dementia Care* 15 (5), pp.36-37.

Urban Design Group (UDG)

OIDSD:UDG

Journal Articles

2007

Butina-Watson, G. and Otsuka, N. (2007). Urban design from children's point of view: lessons learning from JCUD's summer school for children. *Urban Housing Sciences* 56 (Winter Issue), pp.50-54.

Otsuka, N. and Reeve, A. (2007). Town Centre Management and Regeneration: The Experience in Four English Cities. *Journal of Urban Design* 12 (3), pp.435-459.

Otsuka, N. and Reeve, A. (2007). The contribution and potential of town centre management for regeneration: Shifting its focus from 'management' to 'regeneration'. *Town Planning Review* 78 (2), pp.225-250.

Reeve, A., Clark, C., Gatersleben, B., Uzzell, D. (2007). The impact of a new transport link on residential communities. *Journal of Environmental Psychology* 27 (2), pp.145-153.

Reeve, A., Goodey, B. and Shipley, S. (2007). Townscape assessment: The development of a practical tool for monitoring and assessing visual quality in the build environment. *Urban Morphology* 11, pp.25-41.

Reports

2006

Butina Watson, G. (2006). *Transferable lessons from the New Towns - summary report*. London: Department for Communities and Local Government.

Butina Watson, G., Brownill, S., Carpenter, J., Durning, B., Reeve, A. (2006). *Thames Gateway Evidence Review*. London: Department for Communities and Local Government.

Books

2006

Butina Watson, G. and Bentley, I. (2006). *Identity by Design*. Architectural Press.

Magazine/News Articles

2007

Butina Watson, G. (2007). *Transferable Lessons from the New Towns - Town and Country Planning*. 5 March 2007.

Conference Papers

2006

Butina Watson, G. (2006). *Place Identity*. Ho Chi Minh City.

Butina Watson, G. and Gamez Gomez, C. (2006). *Child Friendly Cities*. University of Rhennes.

2007

Butina Watson, G. (2007). Social Learning Space. In: *Reinvention Centre Conference*. Warwick.

International Land Markets

OISD:ILM

Journal Articles

2006

Abdel-Jaber, M., Beale, R. and Godley, M.H.R. (2006). A theoretical and experimental investigation of pallet rack structures under sway. *Journal of Construction Steel Research* 62 (1-2), pp.68-80.

Beale, R. and Godley, M.H.R. (2006). Numerical Modelling of Tube and Fitting Access Scaffold Systems. *Advanced Steel Construction* 2 (3), pp.199-223.

Chin, W., Dent, P. and Roberts, C. (2006). An exploratory analysis of barriers to investment and market maturity in Southeast Asian Cities. *Journal of Real Estate Portfolio and Management* 12 (1), pp.49-57.

French, N. (2006). Freehold Valuations: The Relationship between Implicit and Explicit DCF Methods. *Journal of Property Investment & Finance* 24 (1), pp.87-92.

French, N. (2006). Price and Value. *Journal of Property Investment & Finance* 24 (5), pp.462-463.

French, N. (2006). Value and Worth: Probability Analysis. *Journal of Property Finance and Investment* 24 (4), pp.374-380.

French, N. and Gabrielli, L. (2006). Uncertainty and Feasibility Studies. *Journal of Property Investment & Finance* 24 (1), pp.49-68.

French, N. S. (2006). Review: Essays in Honour of William N Kinnard,. *Journal of Property Investment & Finance* 23 (3), pp.298-301.

Hui, S.K.-F., Csete, J. and Raftery, J. (2006). Factors involved in the success of Hong Kong construction and property entrepreneurs. *International Journal of Entrepreneurial Behaviour and Research* 12 (4), pp.228-245.

Poh, Y. P. and Tah, J. H. M. (2006). Integrated duration-cost influence network for modelling risk impacts on construction tasks. *Construction Management & Economics* 24, pp.861-868.

Pottinger, G., Plimmer, F. and Dixon, T. J. (2006). Valuation Accuracy within the Right to Buy Process. *Journal of Building Appraisal* 2 (2), pp.102-125.

Raftery, J., Csete, J. and Hui, S., K (2006). Factors involved in the success of Hong Kong construction and property entrepreneurs. *International Journal of Entrepreneurial Behaviour & Research* 12 (4), pp.228-245.

Tah, J. and Poh, Y. (2006). Integrated duration-cost influence network for modelling risk impacts on construction tasks. *Construction Management & Economics* 24 (8), pp.861-868.

2007

Cheung, K. and Skitmore, M. (2007). Explorations in specifying construction price forecast loss functions. *Construction Management & Economics* 25 (5), pp.449-465.

Dent, P. and Sims, S. (2007). Property Stigma: wind farms are just the latest fashion. *Journal of Property Investment & Finance* 25 (6), pp.626-651.

Dixon, T. (2007). The Property Development Industry and Sustainable Urban Brownfield Regeneration in England: An analysis of Case Studies in Thames Gateway and Greater Manchester. *Urban Studies* 44 (12), pp.2379-2400.

French, N. (2007). Rack rented Property by Spreadsheet. *Journal of Property Investment & Finance* 25 (3), pp.322-332.

French, N. (2007). Rack Rented Property by Spreadsheet: Introducing Flexibility. *Journal of Property Investment & Finance* 25 (4), pp.401-409.

French, N. and Gabrielli, L. (2007). Market Value and Depreciated Replacement Cost: Contradictory or Complementary? *Journal of Property Investment & Finance* 25 (5), pp.515-524.

- Fu, C., Tah, J., Aquad, G., Kagiogliou, M., Zeisel, J. (2007). Space-centred information management approach to improve CAD based healthcare building design. *IT Con* 12, pp.61-71.
- Grover, R., Soloviev, M.M., and Zakhartchenko, V. (2007). Corporate Real Estate Management during the transition in Russia. *Journal for East European Management Studies* 12 (3), pp.205-231.
- Henneberry, J. and Roberts, C. (2007). Exploring Office Investment Decision-making in Different European Contexts. *Journal of Property Investment and Finance* 25 (3), pp.289-305.
- Keivani, R. and Mattingly, M. (2007). The interface of globalisation and peripheral land in developing countries: implications for urban governance and local economic development *International Journal of Urban and Regional Studies* 31 (2), pp.459-474.
- Kurul, E. (2007). A Qualitative Approach to Exploring Adaptive Re-use Processes. *Facilities* 25 (13/14), pp.554-570.
- Lau, H. H., Beale, R.G. and Godley, M.H.R. (2007). The Effects of Column Base Connectivity on the stability of Slender Frame Structures. *Progress in Steel Building Structures* 9 (3), pp.33-40.
- Lavers, A. (2007). Ethics in Construction Law - European Society of Construction Law Study: Response from eight member countries. *International Construction Law Review* 24 (4), pp.435-452.
- Otsuka, N. and Reeve, A. (2007). Town Centre Management and Regeneration: The Experience in Four English Cities. *Journal of Urban Design* 12 (3), pp.435-459.
- Otsuka, N. and Reeve, A. (2007). The contribution and potential of town centre management for regeneration: Shifting its focus from 'management' to 'regeneration'. *Town Planning Review* 78 (2), pp.225-250.
- Roberts, C., Rapson, D. and Shiers, S. (2007). Social Responsibility: Key Terms and their Uses in Property Investment, Practice Briefing. *Journal of Property Investment & Finance* 25 (4), pp.342-358.
- Shiers, D., Lavers, A. and Keeping, M. (2007). Indicators of the impact of environmental factors on UK construction law: developments in the new millennium. *Construction Management and Economics* 25 (7), pp.821-829.
- Sims, S. and Dent, P. (2007). Property Stigma: Just the latest fashion. *Journal of Property Investment & Finance* 25 (6), pp.626-651.
- Thomas, Q.C.D., Keeping, M. and Lavers, A. (2007). Efficiency Drive. *New Law Journal* 15 June, pp.837-838.
- Wang, H., Hamilton, A., Counsell, J., Tah, J. (2007). A web-based framework for urban data sharing and dynamic integration. *ACE Architecture, City and Environment* 2 (4), pp. 635-657.

Magazine/News Articles

2006

- Dixon, T. (2006). Brown to Gold by way of Green. *Estates Gazette*. 8th April, pp.167-168.
- Dixon, T. (2006). Successful brownfield regeneration in the UK - a sustainable approach. *Brownfield Briefing - the developer's guide to brownfield*, 2006, pp.16-17.
- Dixon, T. (2006). Urban regeneration is creating 'transient' communities. *Guardian*, 9th August, p.1.
- Dixon, T., Brierley, D. and Garvin, S. (2006). Evolution or Revolution? Environmental Insurance and Brownfield Development in the UK. *Sustain* 7 (106), p.61.

2007

- Dixon, T. (2007). Public Opinion on Empty Homes. *Public Agenda, The Times* p.1.
- Dixon, T., Keeping, M. and Roberts, C. (2007). Be Prepared and Benefit - EPC and sustainability special New Regulations for commercial property are proposed. *Estates Gazette* 8th September. pp.292-295.
- Dixon, T., Keeping, M. and Roberts, C. (2007). Facing the Future: Energy Performance Certificates and commercial property. *Investment Property Focus* (8), pp.19-20.
- Dixon, T., Keeping, M. and Roberts, C. (2007). Implications of the EU Energy Performance of Buildings Directive for Property Investors PDF. In: *Investment Property Forum*.
- Dixon, T., Shiers, D. and Brown, S. (2007). Ethical Investment: Surveyors are becoming "Greener" according to a recent global RICS Survey. *Estates Gazette*. 17th November pp.166-168.
- Owen, B. and French, N. (2007). Getting it Together - Regeneration. *Estates Gazette* 21st July pp.138-139.

Conference Papers

2006

- Harrison, M., Beale, R.G., Foster, B., Gu, D.W., Hibberd, S. (2006). The HELM Transferability Project. In: CETL-MSOR Conference. Loughborough: 72-79.
- Ng, A.L.Y., Beale, R. and M.H.R., G. (2006). Dynamic Collapse of Rack Structures. In: *proceedings of the 8th International Conference on Computational Structures Technology*. Las Palmas.

Lau, H., Beale, R., Godley M.H.R., Chong, B.H. (2006). A Parametric Study of the Effect of Column Base Connectivity on the Carrying Capacity of Storage Racks. In: *International Symposium on Steel Structures*. Seoul.

Lavers, A. (2006). Ethics in Construction Law. In: *European Society of Construction Law Annual Conference*. Stockholm.

Lavers, A. (2006). Temporary disconformity revisited. In: *Society of Construction Law Seminar*. Bristol.

Prabhakaran, U., Godley, M.H.R. and Beale, R. (2006). Three-dimensional second order analysis of scaffolds with semi-rigid connections. In: *11th International Symposium on Tubular Structures*. Quebec.

Sajja, S.R., Beale, R.G. and Godley, M.H.R. (2006). Factors Affecting the shear stiffness of pallet rack uprights In: *proceedings International Colloquium on Stability and Ductility of Steel Structures*. Lisbon.

Tah, J. and Dave, B. (2006). Towards Business process management in a medium-sized construction company. In: *World IT Conference for Design and Construction INCITE/ITCSED*. New Delhi, India.

Tah, J. and Poh, Y. P. (2006). A Knowledge-based fuzzy risk aggregation technique for duration and cost risks. In: *World IT Conference for Design and Construction INCITE/ITCSED*. New Delhi, India.

2007

Abanda, F. H. and Tah, J. (2007). Towards the development of a knowledge-repository of emerging innovations for sustainable housing development. In: *International Postgraduate Research Conference*. Salford Quays.

Adigan, O. and Tah, J. (2007). A review of literature on construction supply chain management. In: *International Postgraduate Research Conference*. Salford Quays.

Beale, R. (2007). *Proceedings of the sixth International Conference on Steel and Aluminium Structures, ICSAS 07*, Oxford. Oxford Brookes University, Oxford.

Biscaya, S. and Tah, J. (2007). A Literature review on information coordination in construction. In: *International Postgraduate Research Conference*. Salford Quays.

Cao, A. and Keivani, R. (2007). Land Markets, Property led urban growth and local economic development: lessons from China. In: *4th World Bank Urban Research Symposium*. Washington.

Cao, A. and Keivani, R. (2007). Property-Led urban development model in China: time for Change. In: *European Real Estate Society ERES Conference*. London.

Cao, A. and Keivani, R. (2007). Risks in property investment in China. In: *American Real Estate Society*. San Francisco.

Cho, Y. and Whitehead, C. (2007). Housing Tenure and Residential Mobility in England. In: *APNHR 2007 Conference*. Soeul Korea: 30th Sept-1st Aug.

Dixon, T. (2007). Fiddling while the Planet Burns: The Academic Response in the UK and EU. In: *European Real Estate Society ERES Conference*. London.

Dixon, T. (2007). A Fourth Dimension in Sustainable Urban Regeneration? Governance Structures, Sustainability and CSR in the Public and Private Sectors In: *ESRC/NERC Tran disciplinary Seminar Series Number 5 Sustainable Communities and Environmental Inequalities*. School of Geography, Earth and Environmental Sciences University of Birmingham.

Dixon, T. (2007). Sustainable Urban Brownfield Regeneration: Lessons from Greater Manchester and Thames Gateway. In: *EPSRC/URBIS Conference*. Manchester.

Dixon, T., Al-Tabbaa, A. and Smith, S. (2007). Impact of and Response to Climate Change in UK Brownfield Remediation In: *International Conference on Climate Change: Act Now on Climate Change - Now or Never*. The Chartered Institute of Water and Environmental Management, Hong Kong.

Dixon, T., Brownill, S. and Carpenter, J. (2007). Fit for Purpose? Multilevel Governance in the Thames Gateway. *European Urban Research Association EURA*

French, N. (2007). Valuation Uncertainty - Common Professional Standards and Methods. In: *Paper presented at the Pacific Rim Real Estate Society (PRRES) Conference*. Perth, Australia.

Fu, C., Tah, J. and Ruffle, S. (2007). Implementation of web based Virtual Reality Technology in Public Participation. In: *the 2nd CIB International Conference of Mega Cities*. Guangzhou, China.

Grover, R. and Anghel, I. (2007). Opportunities and constraints on the development of Real Estate Taxation in Transitional Countries. In: *European Real Estate Society Conference*. London.

Grover, R., Platonova, V. and Soloviev, M.M. (2007). Real Estate Issues in the Far Northern Regions. In: *European Real Estate Society Conference*. London

Hannaford, S. and Lavers, A. (2007). Contractors Qualification Criteria for European Public Sector Projects. In: *European Society of Construction Law Annual Conference*. Prague.

Irtaza, H., Beale, R. and Godley, M. (2007). Determination of the Effects of Wind Load on Bare Tube Access Scaffold Structures Using Computational Fluid Dynamics. In: *The 5th International Conference on Advances in Steel Structures (ICASS 2007)*. Singapore.

Kazi, A. S. (2007). Open Building Manufacturing. In: *Open Building Maintenance*. Finland.

Kurul, E., Otsuka, N. and Colantonio, A. (2007). Social Network Analysis: a robust methodology to evaluate knowledge creation capability and absorptive capacity. In: *Construction Management and Economics 25th Anniversary Conference*. University of Reading.

Lau, H., Beale, R. and Godley, M. (2007). The Effects of column base behaviour on the local carrying capacity of columns and frames. In: *The 9th International Conference on Steel, Space and Composite Structures*. Yantai and Beijing.

Otsuka, N., Dixon, T. and Kurul, E. (2007). Developing an integrated network between university, industry and public sectors for sustainability and built environment research. In: *Triple Helix: 6th Biennial International Conference on University, Industry & Government Linkages*. Singapore.

Roberts, C. and Sims, S. (2007). Cashing in on the Green machine: Are developers missing out? European Real Estate Society Conference. In: *European Real Estate Society Conference*. London.

Wernstedt, K., Meyer, P.B., Dixon, T., Yount, K.R., Basu, P. (2007). Liability and the Long Term Effects on Sustainable Urban Regeneration in the UK and USA. In: *Second International Conference on Managing Urban Land (CABERNET)*. Stuttgart.

Books

2006

Hamilton, A., Wang, H., Tah, J., Tanyer, A., Curwell, S., Marshal-Ponting, A., Song, Y., Arayici, Y. (2006). Integration of Building and Urban n-Dimensional Data to Support Intelligent Cities; in Aouad, G., Lee, A., Wu, S (Eds) *Constructing the Future: nD Modelling*. Taylor & Francis.

Arayici, Y. et al. (2006). Integration of Building and Urban n-dimensional Data to support intelligent cities. In: Aouad, G., Lee, A. and Wu, S. (eds.) *Constructing the Future: Modelling*. Taylor & Francis.

2007

Beale, R. G. (2007). Review of Research into Scaffold Structures. In: Topping, B. V. H. (ed.) *Civil Engineering Computations: Tools and Techniques*. Saxe-Coburg, pp.271-300.

Dixon, T. et al. (2007). *Sustainable Brownfield Regeneration: Liveable Places from Problem Spaces*. Oxford: Blackwells.

Keivani, R., Mattingly, M. and Majedi, H. (forthcoming 2007). Enabling private markets or increasing low income access to urban land: the case of Iran. In: Freire, M. et al. (eds.) *Urban and Land Policies for Poverty Reduction*. IPEA.

Reports

2006

Keeping, M., McIntosh, A. and Shiers, D. (2006). *Property sustainability matters*. London: King Sturge.

Lee, A., Wu, S., Marshal-Ponting, A., Aouad, G., Tah, J., Cooper, R. (2006). nD Modelling - A Driver or Enabler for Construction Improvement? *RICS Research Publications* 5 (6).

2007

Cao, A. and Keivani, R. (2007). The role of property markets in supporting economic and social development in China. *RICS Research Publications*.

Colantonio, A. (2007). Social Sustainability: An Exploratory Analysis of its Definition, Assessment Methods, Metrics and Tools. *EIBURS: Working Paper Series*.

Dixon, T. (2007). Learning From Brownfield Development in *Urban Regeneration Toolbox The Politics, The Policies*: Vol. 2.

Dixon, T. et al. (2007). *A Green Profession? RICS Members and the Sustainability Agenda*. London.

Dixon, T., Roberts, C. and Keeping, M. (2007). The Energy Performance of Buildings Directive and Commercial Property Investment: A Situation Review. *Investment Property Forum*.

Dixon, T., Colantonio, A. and Shiers, D. (2007). Socially Responsible Investment (SRI) Responsible Property Investment (RPI) and Urban Regeneration in the UK and Europe: Partnership models and Social Impact Assessment. *EIBURS: Working Paper Series*.

Grover, R. and Soloviev, M. (2007). Real Estate Management: An International Approach (In Russian). *Academy of Privatisation and Business, Moscow*.

Grover, R. et al. (2007). *Good Governance in Land Tenure and Administration*. *FAO Land Tenure Studies*. Rome.

Sims, S. and Dent, P. (2007). *What is the impact of wind farms on house prices?* *FIBRE, RICS*.

Appendix: OISD and SoBE Senior Management Team (Research) and Related Staff



Professor Tim Dixon
Director of OISD
Professor of Real Estate

Tim Dixon is Director of the Oxford Institute of Sustainable Development (OISD) and Professor of Real Estate at Oxford Brookes University, UK. With more than 25 years' experience of research, education and professional practice in the built environment, he is a fellow of the RICS and of the Higher Education Academy, a member of SEEDA's South East Excellence Advisory Board, and a former member of the EPSRC Infrastructure and Environment Strategic Advisory Team (2004-07), as well as the editorial boards of five leading international journals.

He has collaborated on research projects with UK and overseas academics and practitioners, and is currently working on a range of funded sustainability-based research programmes. These include the European Investment Bank's EIBURS programme (social sustainability and urban renewal) and the Investment Property Forum (IPF) project on occupier demand for sustainable offices in the UK. His research on brownfields, as part of the EPSRC SUBR:IM programme, received national coverage in the press, and on the BBC website and local radio. He is co-author of the RICS report 'A Green Profession' and the recent IPF Situation Review of the EU EPBD, and has recently co-edited the Blackwells book, 'Sustainable Brownfield Regeneration: Liveable Places from Problem Spaces', based on the EPSRC SUBR:IM brownfield research, which examines case studies in the Thames Gateway and Greater Manchester.

He is currently establishing an international research network on CSR and SRI issues in the real estate sector (funded through Oxford Brookes University), working with colleagues in the business school, OISD and overseas academics.

Email: tdixon@brookes.ac.uk



Professor Ray Ogden
Assistant Dean (Research)
School for the Built
Environment

Professor Ray Ogden is Assistant Dean (Research) for the School for the Built Environment and Deputy Head of the Department of Architecture. He is also: Professor of Architecture; holder of the Corus Chair of the Building Envelope and Steel Construction Institute Chair of Architectural Technology; Director of the Corus Colorcoat Centre for the Building Envelope (a leading centre of excellence and knowledge leadership in metal building envelope technologies); and Director of OISD:Technology. He has been involved in steel sector research and development activities since 1989 during which time he has carried out a broad range of national and international projects, and authored numerous publications in the areas of building physics, building envelope design and steel construction. Professor Ogden is involved in a wide range of fundamental research activities and 'close to industry' applied research and development.

Email: rogden@brookes.ac.uk



Dr Bridget Durning
OISD Research Manager

Bridget Durning is Manager: Research and Consultancy for OISD. She is also a Senior Research Fellow within the OISD:EASP group, specialising in the fields of skills and knowledge development in the delivery of sustainable communities and environmental management tools and processes. Bridget joined the Department of Planning at Oxford Brookes in 2000 as Project Manager on a Government funded 4 year consortium project investigating the teaching/research-professional practice nexus. Prior to this she spent 8 years in private practice in environmental management and land development and 3 years in local government as a specialist adviser in sustainable development issues to three planning authorities. She has been Manager of Research and Consultancy activities in OISD since it was founded in 2004.

Email: bdurning@brookes.ac.uk

Primary Contacts

Director (OISD)

Prof Tim Dixon

T: 01865 484202

E: tdixon@brookes.ac.uk

Assistant Dean (Research)

Prof Ray Ogden

T: 01865 483208

E: rgogden@brookes.ac.uk

OISD Manager: Research & Consultancy

Dr Bridget Durning

T: 01865 483430

E: bdurning@brookes.ac.uk

Website: www.brookes.ac.uk/schools/be/oisd/

Email: oisd@brookes.ac.uk



Oxford Institute for Sustainable Development (OISD)

This publication is printed on recycled paper