

'Sociale Index'

A Social Monitor for the municipality of Rotterdam

Pieter Koppelaar, *Statistical developer*
Rotterdam Statistics Office



Gemeente Rotterdam
Servicedienst

Point of Departure (list of requirements)

- Provide insight in developments on aspects of social quality
- Show differences between (the 64) districts
- Show developments over time (preferably yearly)
- Give leads to intervention programs (policy formulations)



Development

- **After a comprehensive literature study several aspects of social quality were chosen**
- **Indicators of those aspects were selected from existing census data**
- **A survey was conducted to provide indicators where they were not present in census data**

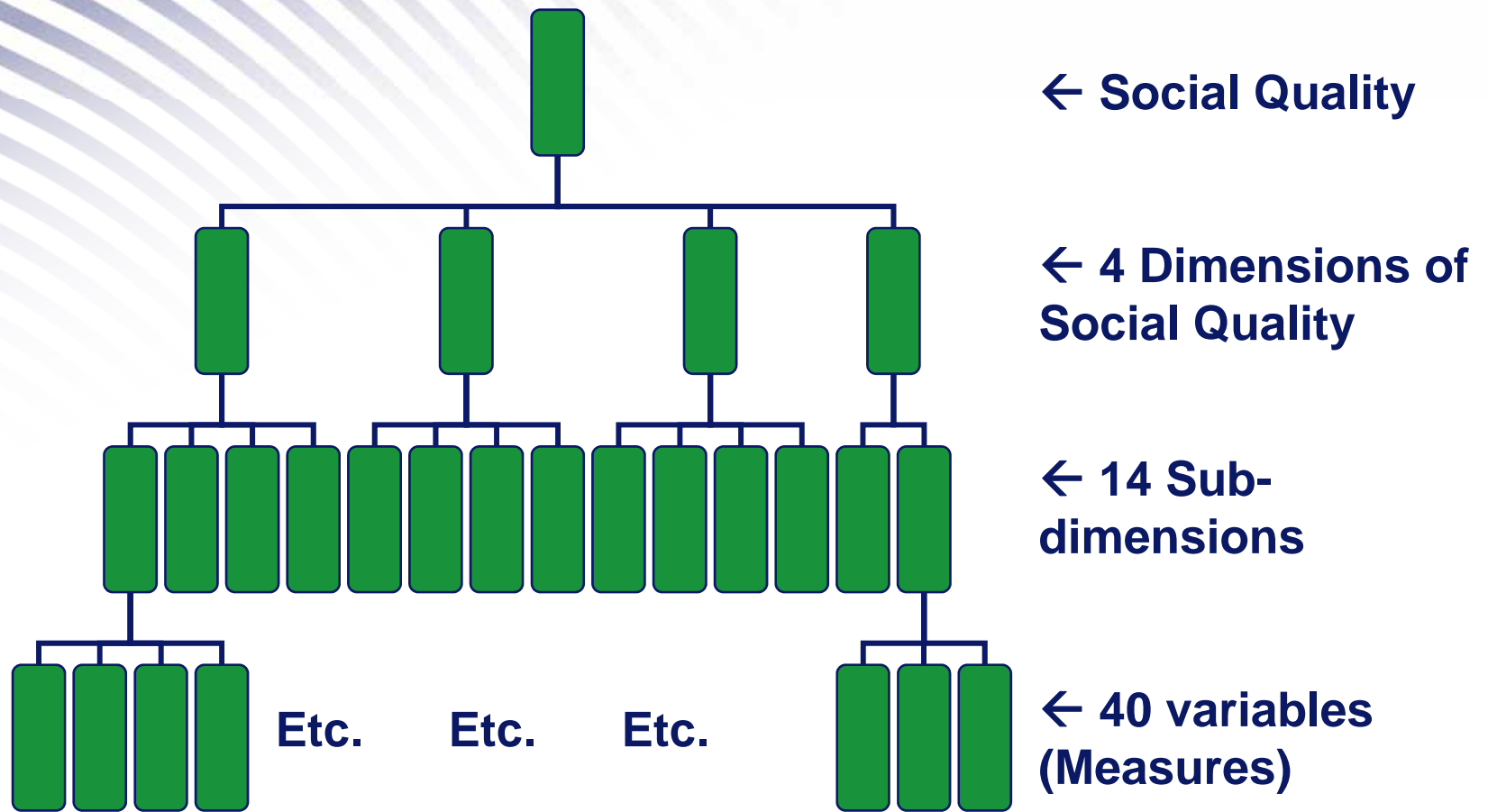


Dimensions (and sub-dimensions)

- **Personal Abilities (language skills, good health, income, education)**
- **Living environment (absence of discrimination, suitable housing, public facilities, safety, etc.)**
- **Participation (going to work/school, social contact, social and cultural activities, etc.)**
- **‘Bonding’ (mobility, ‘feeling connected’, etc.)**



Structure

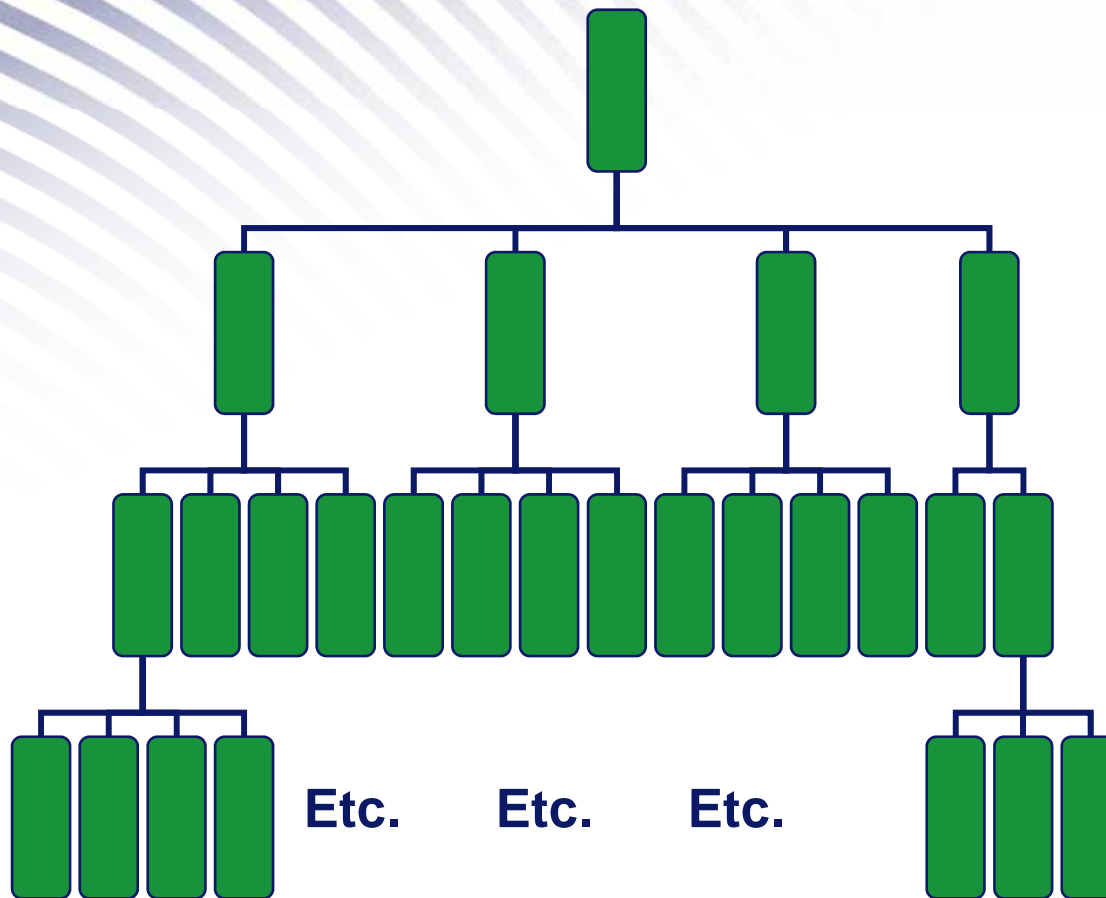


Measures

- **Aggregated for districts (64 districts)**
- **70% survey data**
 - Yearly survey with N=11,000
 - 175 respondents per district/neighbourhood
- **30% census data**
 - Mostly already available



From measures to dimension scores



- Measures are transformed to grades by means of expert ratings
- Grades are averaged to sub-dimensions, dimensions and overall score for social quality



Presentation on website

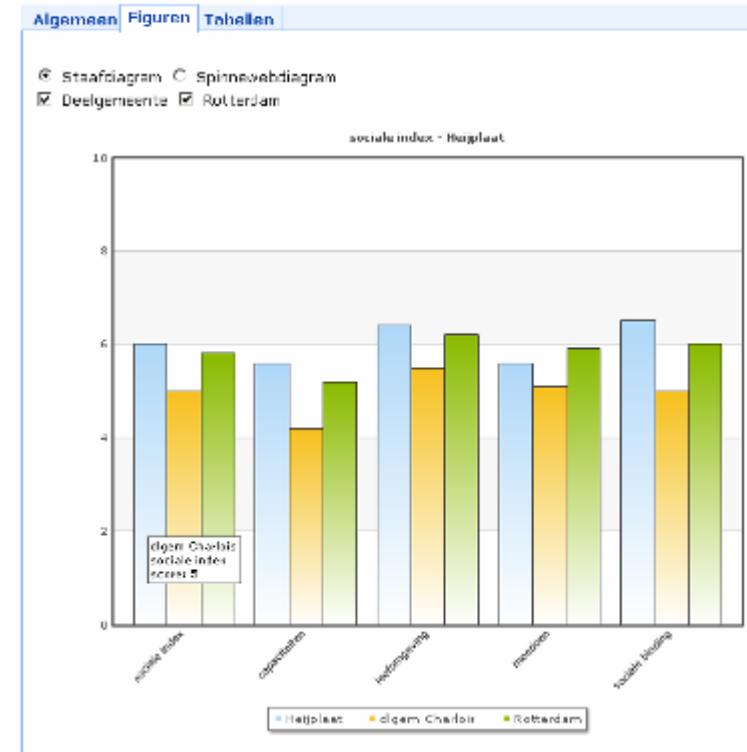
Provides an overview of strong and weak dimensions and sub-dimensions for each of the 64 district

Sociale Index - Rotterdam



Presentation on website (2)

Provides ability to 'drill through' to the underlying variables



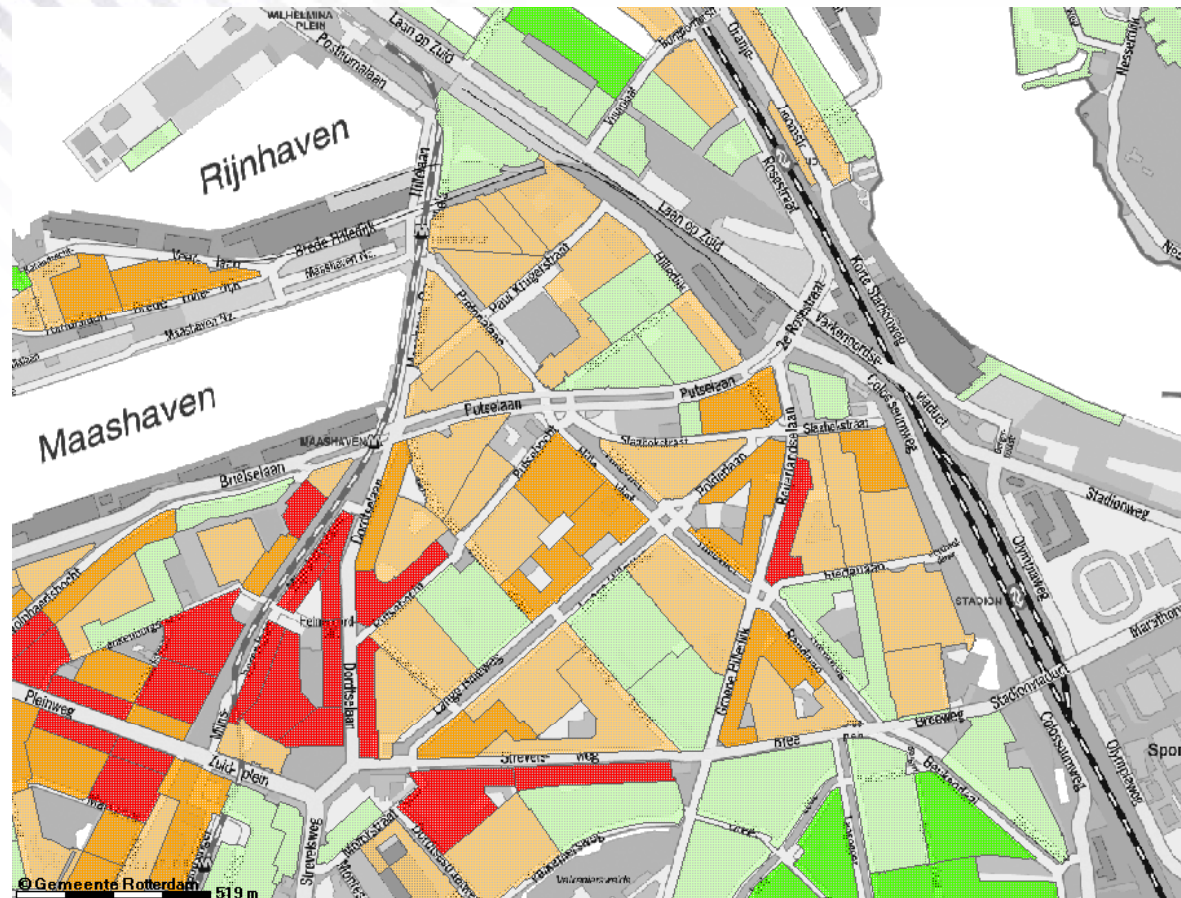
The social monitor is used for

- **Choosing ‘focus’ areas and allocating resources**
- **Assisting policymakers of the sub-municipalities in their analyses of districts**
- **Provide starting point for discussions between policymakers of submunicipalities and various partners (municipal departments, police, housing corporations, etc.)**
- **Monitoring of districts**



Related to the social monitor

Census data presented in a GIS-application to further nuance the analyses at smaller aggregation level (>1,000 blocks of houses)



Discussion...

- **Outcome vs. Output**
- **Stigmatising effects of publishing the monitor?**
- **Other points of discussion...**

